

Title: A randomised, placebo-controlled trial of patient education for acute low back pain (PREVENT Trial): statistical analysis plan

Adrian C Traeger,^{1,2} Ian W Skinner,^{1,2} Markus Hübscher,^{1,2} Hopin Lee,^{1,2} G Lorimer Moseley,^{2,3} Michael K Nicholas,⁴ Nicholas Henschke,⁵ Kathryn M Refshauge,⁶ Fiona M Blyth,⁷ Chris J Main,⁸ Julia M Hush,⁹ Garry Pearce,¹⁰ Serigne Lo,¹¹ James H McAuley^{1,2}

1. Prince of Wales Clinical School, University of New South Wales, Sydney, New South Wales, Australia
2. Neuroscience Research Australia, Sydney, New South Wales, Australia
3. Sansom Institute for Health Research, University of South Australia, Adelaide, South Australia, Australia
4. Pain Management Research Institute, University of Sydney at Royal North Shore Hospital, Sydney, New South Wales, Australia
5. Institute of Public Health, University of Heidelberg, Heidelberg, Germany
6. Faculty of Health Sciences, University of Sydney, Sydney, New South Wales, Australia
7. Centre for Education and Research on Ageing, University of Sydney, Sydney, New South Wales, Australia
8. Arthritis Care UK National Primary Care Centre, Keele University, North Staffordshire, UK
9. Department of Health Professions, Macquarie University, Sydney, New South Wales, Australia
10. Department of Rehabilitation Medicine, Greenwich Hospital, Sydney, New South Wales, Australia
11. Melanoma Institute Australia, Sydney, New South Wales, Australia

Corresponding author:

Name	Adrian C Traeger
Department	McAuley Group
Institution	Neuroscience Research Australia
Country	Australia
Phone	+61416 122 784
Email	a.traeger@neura.edu.au

Keywords Low Back Pain; Patient Education; Preventive Medicine; Primary Care.

Abstract

Background: Statistical analysis plans increase the transparency of decisions made in the analysis of clinical trial results. The purpose of this paper is to detail the planned analyses for the PREVENT trial, a randomized, placebo-controlled trial of patient education for acute low back pain. *Results:* We report the pre-specified principles, methods, and procedures to be adhered to in the main analysis of the PREVENT trial data. The primary outcome analysis will be based on Mixed Models for Repeated Measures (MMRM), which can test treatment effects at specific time points, and the assumptions of this analysis are outlined. We also outline the treatment of secondary outcomes and planned sensitivity analyses. We provide decisions regarding the treatment of missing data, handling of descriptive and process measure data, and blinded review procedures. *Conclusions:* Making public the pre-specified statistical analysis plan for the PREVENT trial minimizes the potential for bias in the analysis of trial data, and in the interpretation and reporting of trial results. *Trial registration:* <https://www.anzctr.org.au/Trial/Registration/TrialReview.aspx?ACTRN=12612001180808>

Bullet Points

- Patient Education is recommended in the primary care management of acute low back pain. The PREVENT Trial is the first placebo-controlled randomized trial to evaluate the efficacy of Patient Education.
- Statistical analysis plans increase the transparency around how researchers plan to estimate and interpret treatment effects from randomized trials.
- This protocol describes the pre-specified principles, methods, and procedures to be adhered to in the statistical analysis of the PREVENT trial data.

Background

The PREVENT Trial is a randomised, placebo-controlled trial of patient education for acute low back pain. The purpose of this Statistical Analysis Plan is to outline planned statistical analysis methods for the primary and secondary outcomes of the trial.

Trial overview

The trial is a two-arm placebo-controlled trial. Patients were randomized to receive two, 1-hr sessions of *Patient Education* based on Explain Pain¹ or two, 1-hr sessions of *Sham Education* based on a reflective, non-directive approach,² in addition to guideline-based care for acute low back pain (NHMRC APP1047827). The study was prospectively registered (ACTRN=12612001180808) and the study protocol has been published.³ Patients were followed up at 3, 6, and 12 months post-randomization.

Trial objectives

Primary Objective

1. Determine whether *Patient Education* in addition to clinical guideline-based care for acute low back pain reduces the intensity of low back pain at 3 months compared to *Sham Education* in addition to clinical guideline-based care.

Secondary Objectives

1. Determine whether any effect of *Patient Education* on the intensity of low back pain at 3 months compared the *Sham Education* can be maintained at 6 and 12 months.
2. Determine whether *Patient Education* increases the proportion of patients who recover from low back pain (i.e. who do not develop chronic low back pain) by 3 months compared to *Sham Education*.

3. Determine whether *Patient Education* can reduce disability, depression, or pain attitudes, or healthcare use at 3, 6 and 12 months, compared to *Sham Education*.

Statistical Analysis

General principles

Two researchers blind to group allocation will perform the analysis independently. That is, the researcher will know which participants share a group, but not which group that is. All results will be cross-checked for errors. In cases where participants did not receive the treatment as allocated, treatment evaluation will be based on the principle of intention-to-treat. In other words, the analysis will only include observed responses from participants in the trial arm they were allocated to, regardless of whether they complied with the treatment and even if the last observed response was baseline. We will calculate and interpret between group differences and 95% confidence intervals for all outcomes. Statistical tests will be two-tailed with alpha set at $p < 0.05$.

Process measures

Adherence

We recorded attendance for all participants at both trial sessions using a study calendar. We will use these data to assess whether the proportion of participants who successfully completed both trial sessions was different between trial arms. If $>5\%$ of participants do not complete both trial sessions, we will compute a “Complier Average Causal Effect.”⁴

Treatment fidelity

We assessed treatment fidelity by audio recording the trial sessions. Two researchers, experts in *Patient Education* (LM) and *Sham Education* (MN) who are blinded to group allocation,

Traeger

PREVENT Trial Analysis Plan

will evaluate a random 10% sample of the trial session recordings to determine whether the participant was receiving *Patient Education* or *Sham Education*. Kappa will be used to determine agreement.

Credibility

We assessed credibility using the Credibility and Expectancy Questionnaire⁵ immediately after the trial physiotherapist provided the treatment rationale. We will compare the between group mean scores of the Credibility and Expectancy Questionnaire using t test to evaluate whether treatment credibility was different in each trial arm.

Blind review of data integrity and handling

All data were collected using online forms. Because the online data collection system required only minimal handling, data will be checked but not double entered as we originally planned and as stated in our protocol.³ To ensure data integrity, a blind assessor will check each variable for out of range or implausible values. Once all data have been checked, we will import the dataset in panel format, into Stata V13.⁶

Participant recruitment and retention

A flow chart describing the numbers of individuals at each stage of the trial from eligibility to final assessment will be reported, according to the CONSORT statements⁷ (see Figure 1).

Baseline description

We will examine the distribution of all baseline variables stratified by treatment group.

Continuous variables will be summarised using the following statistics: number (non-missing

sample size), mean and standard deviation for approximately normally distributed variables; median, minimum, maximum and interquartile range for non-normally distributed variables. Normality will be evaluated using frequency histogram and skewness statistics. The number of missing observations will also be reported. Categorical variables will be summarized by percentages along with their frequencies (numerator) and the number of patients for whom data are available (denominator). Difference between arms will not be tested statistically, but any important imbalance, based on the judgment of the research team, will be mentioned and will be marked with an asterisk (*).

Primary analysis

We calculated that a sample size of 202 participants would provide an 80% power of detecting a mean difference between trial arms of one-point on a 10-point pain intensity scale assuming a standard deviation of 2.3, an α of .05, and allowing 15% loss to follow-up.³ To determine the effect of *Patient Education* on pain intensity we will use longitudinal mixed models.⁸ In longitudinal studies such as randomized trials, mixed models can produce unbiased estimates of treatment effects. A mixed model contains both fixed and random effects. In this analysis, the intervention will be modelled as a fixed effect and, to account for the dependence of repeated measures, the intercepts will be modelled as random effect (Equation 1). We will use an unstructured correlation matrix to specify the model. Our expectation is that the outcome of pain intensity will be normally distributed. Time will be treated as a dummy-coded categorical variable and we will examine group x time interactions to determine treatment effects. Conclusions about the effectiveness of *Patient Education* will be based on the group x time interaction effect and its 95% confidence interval at 3 months.

Equation 1 - Mixed Model for Repeated Measures (MMRM) regression equation for the primary analysis (based on Ashbeck and Bell⁹):

$$Y_{ij} = \beta_1 t1 + \beta_2 t2 + \beta_3 t3 + \beta_4 t4 + \beta_5 \text{treat}_i \times t1 + \beta_6 \text{treat}_i \times t2 + \beta_7 \text{treat}_i \times t3 + \beta_8 \text{treat}_i \times t4 + \beta_i + e_{ij}$$

Y_{ij} = the outcome for the i^{th} participant at the j^{th} time

$i = 1, \dots, n = 202$

$j = 1, 2, 3, 4,$

$t1$ = indicator variable for time 1 (baseline), $t2$ for time 2 (3 months), $t3$ for time 3 (6 months), $t4$ for time 4 (12 months)

$\text{treat}_i = 0$ (control), $\text{treat}_i = 1$ (treatment). The effects of the treatment and the treatment-time interaction are modelled as fixed effects.

$\beta_i = \sim N(0, \sigma_b^2)$ between-person effects, with σ_b^2 between-person variance. The between-person effects are modelled as random effects.

$e_{ij} = \sim N(0, \sigma_e^2)$ within-person effects, with σ_e^2 within-person variance

Assumptions of the Mixed Model for Repeated Measures (MMRM) analysis

The mixed model analysis requires assumptions about the data. These include independence of observations, normality and heteroscedasticity. Missing data are assumed to be Missing at Random. Missing at Random describes the probability of a missing observation being independent of prior observations but conditional on other observed values. MMRM analyses also assume a correlation structure between the repeated measurements. The correlations can be fixed (structured model), decaying (autoregressive model) or unconstrained (unstructured model). We have assumed unconstrained correlations between the repeated assessments.

Secondary analysis

Persistence of effects on pain and disability

To evaluate the effects of *Patient Education* on pain intensity at 6 and 12 months, we will examine the relevant group x time interactions from the longitudinal mixed model used for the primary analysis. We will build a separate model to examine intervention effects on disability at 3, 6 and 12 months. We will specify the disability model in the same way as in the primary analysis (Equation 1), exchanging the Y outcome variable to disability measured on a continuous scale (Roland Morris Disability Questionnaire).¹⁰

Development of chronic low back pain

To assess the number of participants who transition from acute low back pain to chronic low back pain we will categorize participants according to our definition of chronic low back pain: $\geq 2/10$ pain intensity and no periods of recovery at 3 month follow-up.³ To evaluate the effects of *Patient Education* on the development of chronic low back pain, we will estimate the ratio of the odds of having chronic low back pain using a Generalized Mixed Effects Model with a logit link and a random intercept. The model will provide odds ratio between the two arms of experiencing a transition from acute to chronic low back pain.

Short- and long-term effects on pain, disability, depression, pain attitudes and healthcare use

We will undertake exploratory analyses on all secondary outcomes. To test intervention effects on continuous secondary outcomes (disability, depression, pain, global change, pain attitudes and healthcare visits) we will examine group x time interactions from the longitudinal mixed models at each follow-up time point.

Four secondary outcomes were categorical variables: healthcare use (passive modalities e.g. medication, manual therapy vs active modalities e.g. exercise, rehabilitation); choice of practitioner; recurrence; further investigations required. For the outcomes with two categories we will use logistic regression models to determine between group differences. For the outcome with four categories (choice of practitioner), we will use a multinomial logistic regression.

Sensitivity analysis

Out-of-trial therapy

We will evaluate the effect of out-of-trial therapy (number of healthcare visits) as a post-randomization confounder. The purpose of this sensitivity analysis is to assess the influence of *Sham Education*, which may have unintentionally led participants to seek out-of-trial therapy. We will conduct a mediation analysis to estimate the natural direct effect¹¹ of *Patient Education* on pain intensity at 3 months that eliminates the indirect effect of *Sham Education* on pain intensity through out-of-trial therapy.

Reporting data

Continuous outcomes (e.g. low back pain intensity scale) will be summarised by number of data available, mean and standard deviation at each data collection point (Baseline, 3, 6 and 12 months). We will display the treatment effect, estimated as the mean pain intensity scale difference at each time point, along with the corresponding 95% confidence interval and the level of significance. Categorical variables will appear as frequencies and percentages at each time point. We will report overall odds ratios (95 % confidence interval) and the level of significance.

References

1. Butler DS, Moseley GL. *Explain pain*. Noigroup Publications; 2003.
2. Pengel LH, Refshauge KM, Maher CG, Nicholas MK, Herbert RD, McNair P. Physiotherapist-directed exercise, advice, or both for subacute low back pain: a randomized trial. *Ann Intern Med*. 2007;146(11):787-796.
3. Traeger AC, Moseley GL, Hubscher M, et al. Pain education to prevent chronic low back pain: a study protocol for a randomised controlled trial. *BMJ open*. 2014;4(6):e005505.
4. Yau LH, Little RJ. Inference for the complier-average causal effect from longitudinal data subject to noncompliance and missing data, with application to a job training assessment for the unemployed. *Journal of the American Statistical Association*. 2001;96(456):1232-1244.
5. Devilly GJ, Borkovec TD. Psychometric properties of the credibility/expectancy questionnaire. *J Behav Ther Exp Psychiatry*. 2000;31(2):73-86.
6. StataCorp. *Stata Statistical Software: Release 13*. College Station, TX: StataCorp LP; 2013.
7. Schulz KF, Altman DG, Moher D. CONSORT 2010 statement: updated guidelines for reporting parallel group randomised trials. *BMJ*. 2010;340:c332.
8. Twisk JW. *Applied longitudinal data analysis for epidemiology: a practical guide*. Cambridge University Press; 2013.

9. Ashbeck EL, Bell ML. Single time point comparisons in longitudinal randomized controlled trials: power and bias in the presence of missing data. *BMC medical research methodology*. 2016;16:43.
10. Roland M, Morris R. A study of the natural history of back pain. Part I: development of a reliable and sensitive measure of disability in low-back pain. *Spine (Phila Pa 1976)*. 1983;8(2):141-144.
11. VanderWeele TJ. A three-way decomposition of a total effect into direct, indirect, and interactive effects. *Epidemiology*. 2013;24(2):224-232.

CONSORT 2010 Flow Diagram

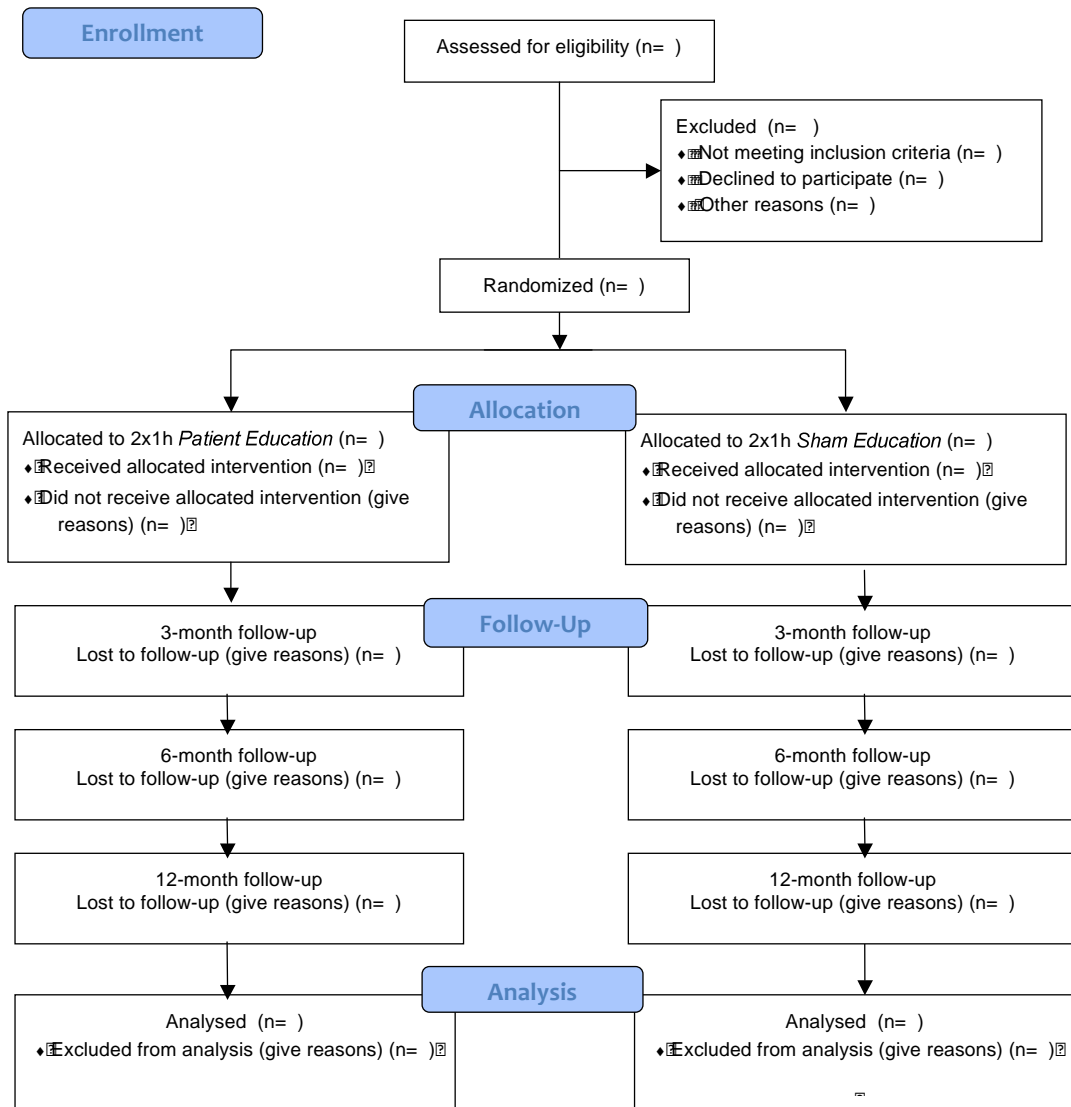


Figure 1. CONSORT 2010 Flow Diagram for planned reporting of the PREVENT Trial