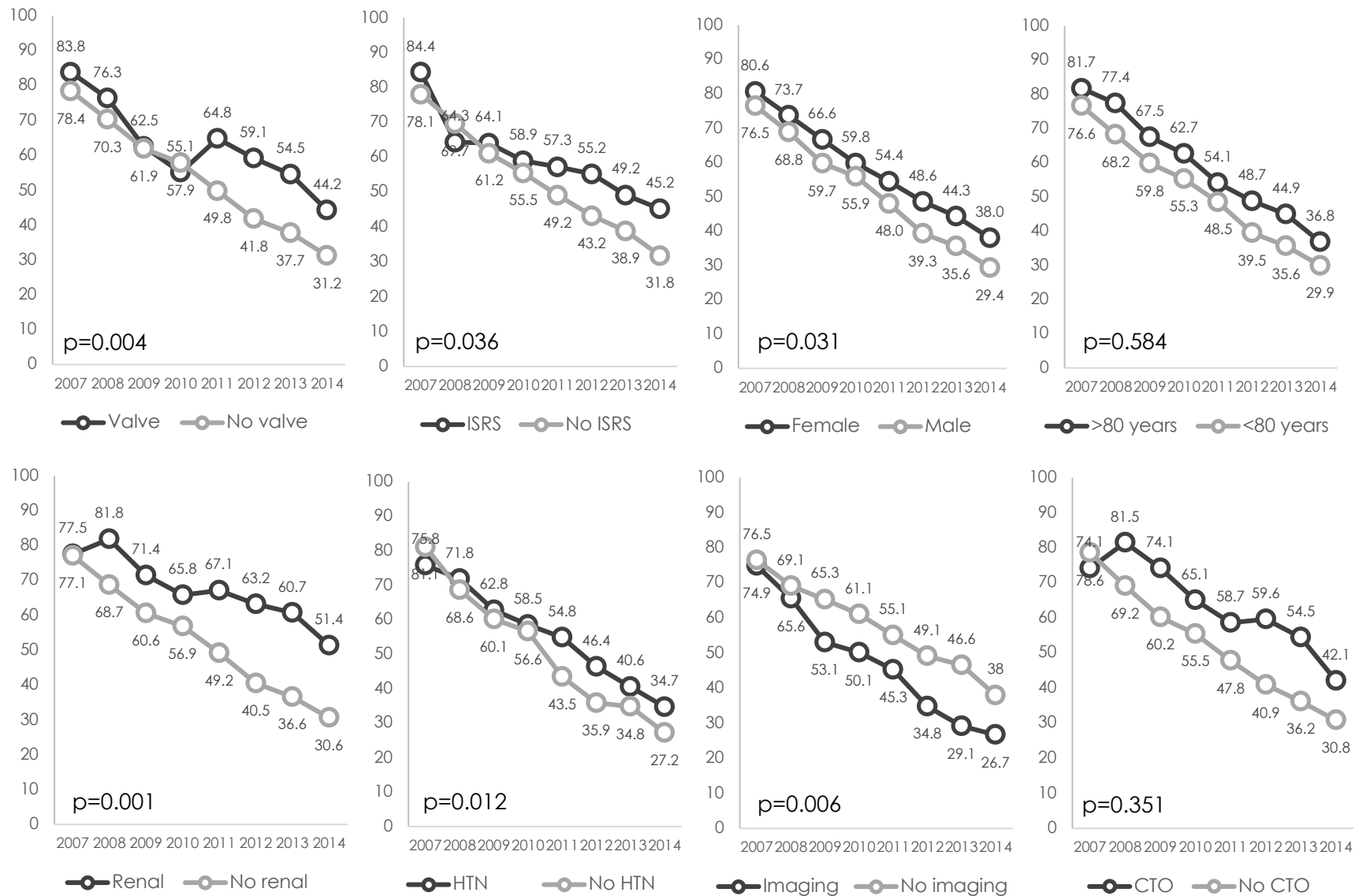
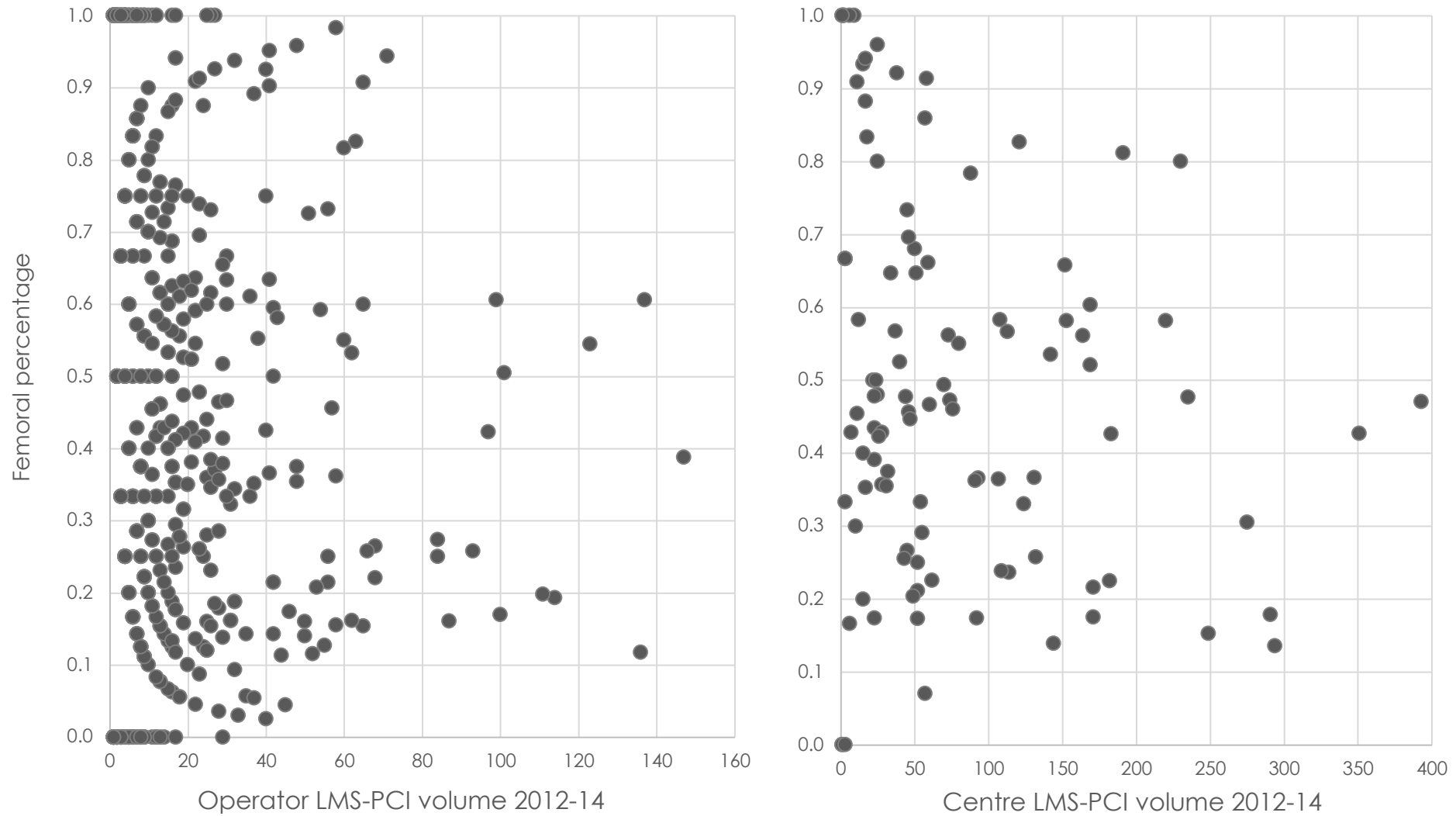


Figure 1: Flow diagram of patients included in the analysis



Supplementary Figure 2: Temporal changes in femoral access use for unprotected LMS-PCI by sub-groups in England and Wales 2007-2014 for comparison between rate of change between groups). P-value for comparison between rate of change of radial access use within each sub-group. ISRS – in stent restenosis; Renal- chronic renal disease; HTN – hypertension; CTO – chronic total occlusion PCI.



Supplementary Figure 3: Left panel - Total Individual operator volumes for left main stem PCI in the United Kingdom between 2012 and 2014 9 (correlation coefficient= -0.1116366, p-value= 0.005); Right panel - Total centre volumes for left main stem PCI in the United Kingdom between 2012 and 2014 (correlation coefficient= -0.1721546, p-value=0.0762)