



# BMJ Open Clinical and cost-effectiveness of bracing in symptomatic knee osteoarthritis management: protocol for a multicentre, primary care, randomised, parallel-group, superiority trial

Melanie A Holden <sup>1</sup>, Michael Callaghan,<sup>2</sup> David Felson <sup>3,4</sup>, Fraser Birrell,<sup>5,6</sup> Elaine Nicholls,<sup>1,7</sup> Sue Jowett,<sup>8</sup> J Kigozi,<sup>8</sup> John McBeth,<sup>9</sup> Belinda Borrelli,<sup>10,11</sup> Clare Jinks,<sup>1</sup> Nadine E Foster,<sup>1</sup> Krysia Dziedzic,<sup>1</sup> Christian Mallen,<sup>1</sup> Carol Ingram,<sup>12</sup> Alan Sutton,<sup>12</sup> Sarah Lawton,<sup>7</sup> Nicola Halliday,<sup>7</sup> Liz Hartshorne,<sup>7</sup> Helen Williams,<sup>4</sup> Rachel Browell,<sup>6</sup> Hannah Hudson,<sup>7</sup> Michelle Marshall,<sup>1</sup> Gail Sowden,<sup>1</sup> Dan Herron,<sup>1</sup> Evans Asamane,<sup>1</sup> George Peat<sup>1</sup>

**To cite:** Holden MA, Callaghan M, Felson D, *et al.* Clinical and cost-effectiveness of bracing in symptomatic knee osteoarthritis management: protocol for a multicentre, primary care, randomised, parallel-group, superiority trial. *BMJ Open* 2021;**11**:e048196. doi:10.1136/bmjopen-2020-048196

► Prepublication history and additional material for this paper is available online. To view these files, please visit the journal online (<http://dx.doi.org/10.1136/bmjopen-2020-048196>).

Received 23 January 2021  
Revised 04 February 2021  
Accepted 12 February 2021



© Author(s) (or their employer(s)) 2021. Re-use permitted under CC BY. Published by BMJ.

For numbered affiliations see end of article.

**Correspondence to**  
Dr Melanie A Holden;  
[m.holden@keele.ac.uk](mailto:m.holden@keele.ac.uk)

## ABSTRACT

**Background** Brace effectiveness for knee osteoarthritis (OA) remains unclear and international guidelines offer conflicting recommendations. Our trial will determine the clinical and cost-effectiveness of adding knee bracing (matched to patients' clinical and radiographic presentation and with adherence support) to a package of advice, written information and exercise instruction delivered by physiotherapists.

**Methods and analysis** A multicentre, pragmatic, two-parallel group, single-blind, superiority, randomised controlled trial with internal pilot and nested qualitative study. 434 eligible participants with symptomatic knee OA identified from general practice, physiotherapy referrals and self-referral will be randomised 1:1 to advice, written information and exercise instruction and knee brace versus advice, written information and exercise instruction alone. The primary analysis will be intention-to-treat comparing treatment arms on the primary outcome (Knee Osteoarthritis Outcomes Score (KOOS)-5) (composite knee score) at the primary endpoint (6 months) adjusted for prespecified covariates. Secondary analysis of KOOS subscales (pain, other symptoms, activities of daily living, function in sport and recreation, knee-related quality of life), self-reported pain, instability (buckling), treatment response, physical activity, social participation, self-efficacy and treatment acceptability will occur at 3, 6, and 12 months postrandomisation. Analysis of covariance and logistic regression will model continuous and dichotomous outcomes, respectively. Treatment effect estimates will be presented as mean differences or ORs with 95% CIs. Economic evaluation will estimate cost-effectiveness. Semistructured interviews to explore acceptability and experiences of trial interventions will be conducted with participants and physiotherapists delivering interventions. **Ethics and dissemination** North West Preston Research Ethics Committee, the Health Research Authority and Health and Care Research in Wales approved the study (REC Reference: 19/NW/0183; IRAS Reference:

## Strengths and limitations of this study

- Large, publicly funded trial addressing an important unresolved question around affordable, effective non-pharmacological management of painful knee osteoarthritis.
- Recruitment from a broad range of settings (general practice, physiotherapy services and self-referral following awareness raising).
- The intervention arm of our pragmatic design stratifies the provision of brace type based on predominant clinical and radiographic features at presentation, incorporates adherence support components and is delivered by physiotherapists—a scalable model for future implementation.
- Restricted range of off-the-shelf brace options included.
- The trial is powered for the overall comparison between treatment arms but not for subgroup analyses of different brace types.

247370). This protocol has been coproduced with stakeholders including patients and public. Findings will be disseminated to patients and a range of stakeholders.

**Trial registration number** ISRCTN28555470.

## INTRODUCTION

Symptomatic knee osteoarthritis (OA) affects an estimated 10% of adults aged over 55 years<sup>1</sup> and has a significant impact on population health, healthcare demand and societal costs. Trends in disability-adjusted life-years attributed to OA,<sup>2</sup> the number and rate of

primary knee replacements,<sup>3-6</sup> and rates of new presentations to primary care<sup>7</sup> all suggest an increasingly common problem that accounts for up to 0.5% gross domestic product in high-income countries.<sup>8,9</sup>

In the UK, the National Institute for Health and Care Excellence (NICE) currently recommends that people with OA who have 'biomechanical joint pain with or without instability should be considered for assessment for bracing as an adjunct to their core treatments'.<sup>10</sup> However, there remains a lack of high-quality trials on their clinical and cost-effectiveness. While some international clinical guidance recommend bracing for knee OA,<sup>11,12</sup> several others have been unable to make a recommendation due to the limited evidence base.<sup>13-16</sup>

A Cochrane review, originally published in 2005<sup>17</sup> and updated in 2015,<sup>18</sup> identified five randomised controlled trials (RCTs),<sup>19-23</sup> with sample sizes ranging from 33 to 117, that compared a type of brace for OA of the knee versus no treatment or other treatment such as restricted activity, patient education, exercise, pharmacological treatment and orthoses or surgical treatment. The review concluded that 'low-quality evidence suggests that people with OA who use a knee brace may have little or no reduction in pain or improvements in knee function and quality of life'. Since then, five further systematic reviews<sup>16,24-27</sup> and one narrative review<sup>28</sup> have been published and identified a total of 13 RCTs,<sup>29-41</sup> (two RCTs were published after the Cochrane review).<sup>40,41</sup> These concluded that either the existing evidence is insufficient,<sup>16,26,27</sup> or is consistent with small-to-moderate effects on pain and function for unloader braces<sup>24</sup> and soft sleeve braces<sup>25</sup>; therefore, further investigation is warranted. Only three trials<sup>20,21,29</sup> and one observational study<sup>42</sup> followed participants up for 6 months or longer.

The current trial was designed in response to a commissioned call from the National Institute for Health Research Health Technology Assessment programme for an efficient and pragmatic trial to investigate, in primary care, the clinical and cost-effectiveness of knee braces in the management of knee OA.

## OBJECTIVES

The overall aim of the 'PROvision of braces for Patients with knee OA' (PROP OA) trial is to determine the clinical and cost-effectiveness of adding knee bracing (matched to patients' clinical and radiographic presentation and with adherence support) to advice, written information and exercise instruction compared with advice, written information and exercise instruction alone, in adults with symptomatic knee OA.

Specifically, our primary objective is to determine, in adults with symptomatic knee OA, if the advice, written information and exercise instruction plus knee brace is superior to advice, written information and exercise instruction alone for Knee Osteoarthritis Outcomes Score (KOOS)-5, a composite score of patient-reported pain, other symptoms, activities of daily living (ADLs),

function in sport and recreation and knee-related quality of life, at 6 months.

Key secondary objectives are to determine, in adults with symptomatic knee OA:

- ▶ If the advice, written information and exercise instruction plus knee brace is superior to advice, written information and exercise instruction alone for KOOS-5 at 3 and 12 months.
- ▶ If the advice, written information and exercise instruction plus knee brace is superior to advice, written information and exercise instruction alone for the separate components of KOOS-5 (patient-reported pain, other symptoms, ADLs, function in sport and recreation and knee-related quality of life) at 3, 6 and 12 months.
- ▶ Cost-effectiveness of the advice, written information and exercise instruction plus knee brace compared with advice, written information and exercise instruction alone.

Other secondary objectives are to determine:

- ▶ If the advice, written information and exercise instruction plus knee brace is superior to advice, written information and exercise instruction alone for: self-reported pain; instability (buckling); treatment response; physical activity; social participation; arthritis self-efficacy.
- ▶ Safety of knee bracing in adults with symptomatic knee OA ((serious)- related adverse events (SAE)).
- ▶ Acceptability and experiences of the trial procedures and interventions to participants receiving and physiotherapists delivering, the trial interventions.
- ▶ Adherence to interventions, including exploring barriers and enablers of adherence to brace use in participants allocated to the advice, written information and exercise instruction plus knee brace intervention.

A priori exploratory subgroup analyses will explore the effectiveness of the knee brace plus advice, written information and exercise instruction intervention versus advice, written information and exercise instruction alone by: (1) predominant knee compartmental involvement, (2) knee buckling, (3) adherence to brace use, (4) anxiety/depression. We will also explore how often physiotherapists' clinical judgement on appropriate brace type is changed by plain X-ray findings.

## DESIGN

A multi-centre, primary care, randomised (1:1), parallel-group, superiority trial with internal pilot (see online supplemental datafile 1 for further details relating to the internal pilot and progression criteria). The trial protocol has been coproduced with stakeholders including patients.

## Setting

Participants will be recruited from National Health Service (NHS) general practice, physiotherapy services

**Table 1** Eligibility criteria

Inclusion criteria	Exclusion criteria
<ul style="list-style-type: none"> <li>▶ Aged 45 years and over</li> <li>▶ Residing in England</li> <li>▶ Clinically significant knee pain on weight bearing (NRS <math>\geq 4</math>)</li> <li>▶ With or without knee instability (buckling)</li> <li>▶ Able to have knee X-ray</li> <li>▶ Able to read and write English</li> <li>▶ Access to a mobile phone that can receive SMS text messages</li> <li>▶ Able to give full informed consent</li> <li>▶ Willing to participate</li> </ul>	<ul style="list-style-type: none"> <li>▶ Red flags in the history or clinical examination that may indicate further investigation or referral for possible serious underlying pathology (NICE V.5.1.1.<sup>10</sup>)</li> <li>▶ Vulnerable individuals (eg, in palliative phase of care for cancer, unstable mental health disorders).</li> <li>▶ Inflammatory/crystal arthritis (eg, rheumatoid arthritis, gout, psoriatic arthritis).</li> <li>▶ Significant neurological disorder (eg, stroke, Parkinson's disease, multiple sclerosis, dementia).</li> <li>▶ Fibromyalgia.</li> <li>▶ Symptoms not attributable to knee OA.</li> <li>▶ Previous major surgery in the knee to be treated (partial/total knee replacement; high tibial osteotomy, not other previous arthroscopic surgery).</li> <li>▶ Autologous cartilage implantation in last 12 months in the knee to be treated</li> <li>▶ On the waiting list for total hip or knee replacement within the next 6 months.</li> <li>▶ Unwilling to wear a knee brace.</li> <li>▶ Brace size unavailable for leg circumference.</li> <li>▶ Knee brace contraindicated (superficial wounds where the knee brace would reside, psoriasis, eczema or poor circulation, arterial insufficiency, or severe varicosities that could result in skin at risk with regular brace wear, a history of thrombophlebitis in either leg).</li> <li>▶ Significant fixed flexion deformity that prevents fitting of brace.</li> <li>▶ Injection in the knee to be treated within the last 3 months.</li> <li>▶ Recent/routine knee brace wear within the last 3 months.</li> <li>▶ Nursing home resident.</li> <li>▶ Unable to attend clinic.</li> <li>▶ Close family member already a trial participant.</li> <li>▶ Course of physiotherapy for the knee to be treated in the last 3 months.</li> </ul>

NICE, National Institute for Health and Care Excellence; NRS, Numerical Rating Scale; OA, osteoarthritis.

and from self-referral within the community following an awareness raising campaign. Interventions will be delivered within PROP OA knee pain clinics based in physiotherapy services at four NHS sites with onsite radiography departments in England (Cheshire, Manchester, Northumbria and Staffordshire).

### Eligibility criteria

The target population is adults aged  $\geq 45$  years with symptomatic knee OA, moderate-to-severe pain during weight-bearing activity, with or without knee buckling, who have no current or recent knee brace use but who would be willing to consider using a knee brace (table 1).

### Participant identification

Three methods will be used to identify potential participants, informed by our previous pragmatic trials of treatments for musculoskeletal pain conditions in primary care<sup>43–45</sup>:

### Identification of general practice consultants

Electronic records of participating general practices will be screened to identify adults aged 45 years and over who have consulted for knee pain in the last 24 months, using knee pain related diagnostic or symptomatic Read/Systematized Nomenclature of Medicine (SNOMED) codes. General practice staff will also identify potentially suitable participants during prospective consultations. In the event of slower than expected recruitment, we will increase the number of participating general practices and increase the time period for previous consultation with knee pain from 24 to 36 months.

### Screen of physiotherapy referrals

Physiotherapy referrals will be screened to identify adults aged 45 years and over with knee pain potentially due to OA.

### Self-referral from the community

Not all individuals with knee OA will consult healthcare about their knee problem. Information about the trial

will be disseminated in the local communities around the participating sites via an awareness raising campaign. Interested participants will telephone the trial administrator to register their interest.

### Screening

Identified individuals will be mailed a covering letter and Participant Information Leaflet (PIL). If interested in participating they will be asked to telephone the trial team: a trial administrator will check initial eligibility and answer any questions. Individuals who fulfil telephone eligibility criteria and are willing to participate will be invited to attend further face-to-face screening (Clinical Eligibility Assessment). At this visit activities will include:

#### Confirmation of eligibility assessment by a PROP OA-trained physiotherapist

A clinical examination will be undertaken to confirm eligibility and to determine, on clinical grounds, the predominant knee compartment affected (medial tibiofemoral, lateral tibiofemoral, patellofemoral, no clear predominant compartment).

#### Plain X-rays of knees (if needed)

To minimise unnecessary radiation exposure, we will attempt to access and read any knee X-rays taken within 24 months where they exist. We will obtain new knee X-rays for eligible participants who have no knee X-rays within 24 months, or whose knee X-rays are unobtainable/unsuitable (eg, poor-quality images, lack necessary views). All images will be taken in the radiology departments at each site using National Health Service (NHS) standard protocols. The treating physiotherapist will assess the X-rays for the purpose of producing an overall judgement on the most severely affected compartment.

After 2 weeks (to allow reporting of X-rays), eligible participants willing to participate in the trial will attend a 'Treatment Visit' where informed consent will be obtained (by a trial physiotherapist), baseline data collected, randomisation performed and trial treatments provided.

### Allocation

Using Keele Clinical Trial Units (CTUs) computerised web-based randomisation service and random number generator, eligible participants recruited to the trial will be randomly assigned to receive either advice, written information and exercise instruction alone or advice, written information, and exercise instruction plus knee brace, using a 1:1 allocation ratio and random permuted blocks. This is a secure randomisation system with emergency telephone back-up. Randomisation will be stratified by physiotherapy clinic site (Cheshire, Manchester, Northumbria and Staffordshire), predominant compartmental distribution of knee OA based on combination of clinical assessment and X-rays, and by presence of instability (buckling). Randomisation will be executed in real time within the Treatment Visit by a clinic administrator. The randomisation code will be allocated only after the participant has been recruited into the trial, and after all

baseline data are collected. The randomisation schedule will be password protected to ensure that allocation remains concealed from all staff involved in the randomisation process. Thus our procedures ensure baseline data are collected prior to randomisation, that the allocation is concealed until after the participant has been recruited into the trial and until the moment of randomisation and that the person assigning participants to intervention arm (clinic administrator) has no involvement in the eligibility screen, consent or treatment processes.

### Blinding

Within this trial it is impossible to blind participants or physiotherapists to treatment allocation. However, a trial administrator will oversee collection of baseline questionnaire data ahead of treatment allocation and a trial administrator will remain blind to treatment allocation to enable them to conduct Minimum Data Collection (MDC) over the telephone free of allocation bias. The trial statistician who will be performing analysis of the data collected will also be blind to treatment allocation.

### Interventions

#### Comparator: advice, written information and exercise instruction

A single, face-to-face, 20 min consultation with a physiotherapist that, in line with NICE core treatment recommendations for OA,<sup>10</sup> will include: verbal and written education regarding pathogenesis and prognosis of knee OA and the benefits of exercise, increasing physical activity and weight loss; simple self-help advice on pain management, including home-use of heat/cold, pacing of activities and simple analgesia (we will use the Osteoarthritis Guidebook ([https://www.keele.ac.uk/media/keeleuniversity/ri/primarycare/pdfs/OA\\_Guidebook.pdf](https://www.keele.ac.uk/media/keeleuniversity/ri/primarycare/pdfs/OA_Guidebook.pdf)) with minor trial-specific changes adapted by Public and Patient Involvement and Engagement (PPIE)); and advice to complete a home-based lower limb exercise programme focusing on muscle strengthening, knee range of movement and proprioception (see online supplemental datafile 2). This reflects 'best care' routinely available in primary care where knee OA is typically managed. The content of the advice and exercises was informed by our previous knee OA trials testing physiotherapist led OA care.<sup>44 46</sup>

#### Intervention: advice, written information and exercise instruction plus knee brace with adherence enhancing component

An initial 1-hour face-to-face treatment session with a physiotherapist, a 30 min face-to-face follow-up appointment with the physiotherapist 2 weeks later, and motivational prompts to enhance brace adherence sent via SMS text message over 6 months.

#### Initial treatment session

Participants will receive advice, written information and exercise instruction as described above, plus knee brace and adherence enhancing components.



### Knee brace

In addition to advice, written information and exercise instruction, participants will be given either a patellofemoral, tibiofemoral unloading, or neutral stabilising knee brace according to whether their pattern of knee OA was predominantly patellofemoral OA, tibiofemoral OA (medial/lateral) or generalised knee OA. This will be based on clinical assessment and X-ray findings, but also taking into account current and desired level of physical activity, ability to don/doff brace, willingness to wear the brace type, and immediate symptom response when the brace is tried on and tested in clinic. Braces will be fitted to ensure maximum comfort (eg, hinges contoured, straps adjusted and cut to match participants' body shape and size). Dose of brace use will be individually tailored. Participants will be advised to wear the brace on painful weight-bearing activity, with a starting minimum usage of 1 hour on  $\geq 2$  days/week, gradually increased based on tolerance to wearing the brace on all painful weight-bearing activities up to a maximum of 8–12 hours/day. Individuals will be advised to wear the brace for 6 months and continue to wear it beyond this time if they find it beneficial. Verbal and written information will be provided on brace application and care, including cleaning instructions and what to do in instances of slippage, discomfort or skin irritation. Supporting patient material (eg, written information, short video clips) on brace application produced by the brace manufacturers will be available.

The braces selected for use in this trial are from the two most-referenced manufacturers in the medical literature (Össur and Donjoy)<sup>47</sup> and the manufacturer of the patellofemoral brace (Bioskin) previously demonstrated to be clinically effective in a similar population as intended with the current trial.<sup>40</sup> The braces, by type, are: patellofemoral—Bioskin Q Brace; tibiofemoral unloading—Össur Unloader One (first choice), Donjoy OA Nano (second choice); neutral stabilising—Össur Formfit Knee Hinged. These have been selected to provide an appropriate brace within each brace type, based on previous trial experience and evidence, PPIE feedback and expert opinion (including Clinical Advisory Group (CAG) members' views).

### Brace adherence enhancing component

Brief motivational interviewing (MI) techniques will be used to build participants' intrinsic motivation and resolve ambivalence about adhering to brace use.<sup>48</sup> The techniques will be based on brief strategies to enhance motivation to change,<sup>48</sup> including both communication strategies and motivational techniques. Communication strategies include: (1) open-ended questions that invite patients to provide their thoughts about brace adherence in a non-judgemental atmosphere, (2) use of affirmations or statements that creates rapport and recognises participants' strengths and small steps towards improved adherence; (3) reflective listening to convey provider understanding, provide new perspectives on their situation and help providers deal with resistance and (4) use of

summaries to help resolve ambivalence and highlight the patient's self-motivational statements. Motivational techniques include (1) helping the patient weigh the costs and benefits of adherence to brace use, (2) providing education and feedback on adherence using the 'elicit-provide-elicit' process, (3) exploring barriers and facilitators of motivation to adhere and confidence to adhere, and (4) discuss how adherence can enhance, rather than detract from, things they most highly value (values clarification). Participants will be provided with a diary which they can use to record whether they have worn the brace, for how long, if not what were the barriers to wearing the brace, and what are the possible solutions to those barriers.

### Follow-up treatment session

During the follow-up consultation the physiotherapist will check response to, and fit of the brace. For participants who report tolerating it well and finding it helpful, brace use will be increased for longer durations of painful weight bearing activity. If participants are experiencing discomfort or not finding it helpful, brace fit and dose may be reduced. In extreme cases, if the brace is not tolerated, it may be changed. Adherence to brace use will be reviewed and addressed using brief MI techniques and based on information provided within the brace diary.

### Motivational prompts to enhance brace adherence

Motivational prompts to encourage brace adherence will be sent to individuals receiving advice, written information and exercise instruction plus knee brace intervention via Short Message Service (SMS) text message. The content of these texts will be tailored to the level of brace use reported by the participant (low: wearing knee brace on less than 2 days per week; mid: wearing knee brace on 2–4 days per week for 1 or more hours per day or wearing knee brace on 5–7 days per week for 1–3 hours per day; high: wearing knee brace on 5–7 days per week for 4 or more hours per day). For example, patients who have low use will receive texts that target their ambivalence about wearing the brace; those with moderate levels of use will receive texts about problem solving and barriers along with some motivational strategies and those with the highest level of use will receive congratulatory messages and messages regarding potential benefits they may have incurred. Motivational prompts will be sent weekly for the first 4 weeks, fortnightly for the next 8 weeks, and then monthly until the intervention period ends at 6 months.

### Cointerventions

All participants will be advised that they can continue to access usual healthcare, including medications and consultations with other health professionals. Participants allocated to the comparator arm will be asked not to wear a knee brace for the 6-month period following randomisation. Details of cointerventions will be recorded in follow-up questionnaires.

## Study training

Physiotherapists delivering trial interventions will be representative of the range of physiotherapists that patients would see beyond the trial in the UK NHS setting. Participating physiotherapists will deliver both interventions and will receive a 3-day PROP OA training programme prior to the trial starting, regular reminders regarding the content of treatment sessions for the first 3 months, and refresher training at 6 months and 1 year. Training will cover all trial aspects including: clinical assessment; reading and interpretation of plain knee X-rays to judge compartmental involvement and inform brace allocation; provision of trial interventions, including dovetailing the provision of knee braces with brief MI techniques to facilitate brace adherence and Good Clinical Practice (GCP) and trial procedures. To promote protocol fidelity, the training programme will be delivered using interactive group discussion, problem solving, case examples and role play. In addition, physiotherapists will receive a PROP OA manual to following when delivering both interventions. Physiotherapists will record intervention provision using case report forms (CRFs), which will be monitored over the course of the trial and used to assess ongoing treatment fidelity.

## Outcomes

The end points are defined as: primary end point at 6 months for clinical effectiveness and at 12 months for cost-effectiveness analysis, and withdrawal for any reason. A schedule of enrolment, interventions and assessments is provided in [table 2](#).

The primary outcome is patient-reported composite knee score of patient reported pain, other symptoms, ADLs, function in sport and recreation and knee-related quality of life (KOOS-5).<sup>49</sup>

## Secondary endpoints/outcomes

Secondary outcomes include patient reported pain, other symptoms, ADLs, function in sport/recreation and knee-related quality of life (KOOS subscales),<sup>49</sup> pain (pain on weight-bearing activity (Numerical Rating Scale)), intermittent and constant pain (ICOAP)<sup>50</sup>; instability (buckling)<sup>51</sup>; Osteoarthritis Research Society International responder criteria<sup>52 53</sup>; physical activity (International Physical Activity Questionnaire-Elderly<sup>54</sup>); social participation (PROMIS)<sup>55 56</sup>; arthritis self-efficacy<sup>57</sup>; treatment acceptability<sup>58</sup>; (SAE). KOOS Pain items contain those needed to score Western Ontario and McMaster Universities Osteoarthritis Index (WOMAC) Pain, KOOS ADLs score is the same as WOMAC Physical Function score and KOOS-4 can be easily computed: all of which permits wider comparison of findings and facilitates future individual participant data (IPD) meta-analysis (see [table 2](#)).

## Cost-effectiveness

Outcomes include the EQ-5D-5L questionnaire<sup>59</sup> and self-reported knee OA-related resource use related to both primary and secondary care consultations, inpatient stays

and treatment including surgery. Data will be collected within the trial to determine the cost of the interventions (physiotherapist time, cost of braces). Unit costs from standard UK sources will be sought for all healthcare resource use items. Data on broader costs will also be collected, related to both out of pocket costs (eg, over-the-counter medications), private healthcare and time off work to calculate productivity losses.

## Time to and receipt of knee surgery (knee arthroscopy and knee joint replacement)

All participants will be invited to consent to linkage of their trial data to the Hospital Episode Statistics and National Joint Registry and medical record review to enable future evaluation of receipt of knee arthroscopy and knee joint replacement.

## Adherence

Adherence to interventions will be measured via self-report in follow-up questionnaires (using similar questions to those we have used in previous trials of non-pharmacological care for OA).<sup>44</sup> In those randomised to advice, written information and exercise instruction plus knee brace, SMS text messages will also seek data on number of days per week and hours per day of brace usage, sent on a tapering schedule over the first 6 months of follow-up, with a text message also at 12 months. We will seek to include an objective measure of adherence to brace use, with participants blinded to this.

## Adverse events

The occurrence of adverse events considered to be related to the trial interventions for each intervention will be monitored and assessed using CRFs, contact with the trial team, physiotherapist report and follow-up questionnaires. Expected adverse events from knee braces for knee OA include: swelling, blisters and skin irritation. An expected adverse event from unaccustomed exercise and physical activity is temporary, mild muscle soreness. An SAE is an untoward event that: (1) results in death; (2) is life threatening; (3) requires hospitalisation or prolongation of existing hospitalisation; (4) results in persistent or significant disability/incapacity; (5) consists of a congenital anomaly/birth defect or (6) is otherwise considered medically significant. Where an SAE is considered to be potentially related to trial procedures, reporting procedures will be followed that are in accordance with GCP guidance. All SAEs either confirmed or suspected to be related to the trial procedures will be considered by the external monitoring committees.

## Data collection

All trial participants will be asked to complete a paper questionnaire at, or just prior to, the baseline clinic appointment and a posted questionnaire after 3, 6 and 12 months postrandomisation (see [table 2](#) for a summary of questionnaire content). Standard Keele CTU procedures will be followed to maximise follow-up, including postcard and questionnaire reminders. In addition, a £10

**Table 2** Schedule of enrolment, interventions and assessments

Time point	Enrolment		Post-randomisation			
	-8 to -0 weeks	0	2 weeks	3 months	6 months	12 months
<b>Enrolment</b>						
Telephone eligibility assessment	X					
Informed consent to assessment	X					
Clinical eligibility assessment	X					
Knee X-ray acquisition/reporting	X					
Knee X-ray assessment		X				
Informed consent to randomisation, treatment		X				
Random allocation		X				
<b>Interventions</b>						
Advice, written information and exercise instruction		X				
Advice, written information and exercise instruction+knee brace		X	X			
<b>Assessment**</b>						
Demographics	X					
Medical history and physical assessment	X					
Pain manikin	X					
Frequent knee symptoms in last month	X					
KOOS-5*	X			X	X	X
KOOS Activities of Daily Living†	X			X	X	X
KOOS Pain†	X			X	X	X
KOOS Symptoms†	X			X	X	X
KOOS Sports/Recreation†	X			X	X	X
KOOS Quality of Life†	X			X	X	X
KOOS-4	X			X	X	X
Knee pain on weight-bearing activity (0–100 NRS)†	X			X	X	X
Intermittent and Constant Pain (ICOAP)	X			X	X	X
Knee buckling‡	X			X	X	X
Physical activity (IPAQ-E)	X			X	X	X
Arthritis self-efficacy	X			X	X	X
HADS: Anxiety	X					
HADS: Depression	X					
PROMIS Social participation	X			X	X	X
Adverse events			X	X	X	X
Adherence§			X	X	X	X
Patient global rating of change¶				X	X	X
OARSI-OMERACT responder criteria				X	X	X
Treatment acceptability				X		
EuroQol EQ-5D-5L	X				X	X

Continued

Table 2 Continued

Time point	Enrolment	Random allocation	Post-randomisation			
	-8 to -0 weeks	0	2 weeks	3 months	6 months	12 months
Healthcare resource use (NHS/private)	X			X	X	X
Out-of-pocket expenses	X				X	X
Time off work	X				X	X

\*Primary outcome.

†Key secondary outcomes.

‡Single item used for stratified randomisation, multiple items used for outcome evaluation.

§Obtained in part through: two-way SMS text messages at weeks 1, 2, 3, 4, 6, 8, 10, 12, 16, 20, 24, 52; self-report via questionnaire at 3, 6 and 12 months.

¶Measure used only to classify OMERACT-OARSI responder.

\*\*Close-out at 12 months for analysis of clinical effectiveness.

HADS, Hospital Anxiety and Depression Scale; ICOAP, Intermittent & Constant Osteoarthritis Pain; IPAQ-E, International Physical Activity Questionnaire-Elderly; KOOS, Knee Osteoarthritis Outcomes Score; NHS, National Health Service; NRS, Numerical Rating Scale; OARSI-OMERACT, Osteoarthritis Research Society International; PROMIS, Patient-Reported Outcomes Measurement Information System.

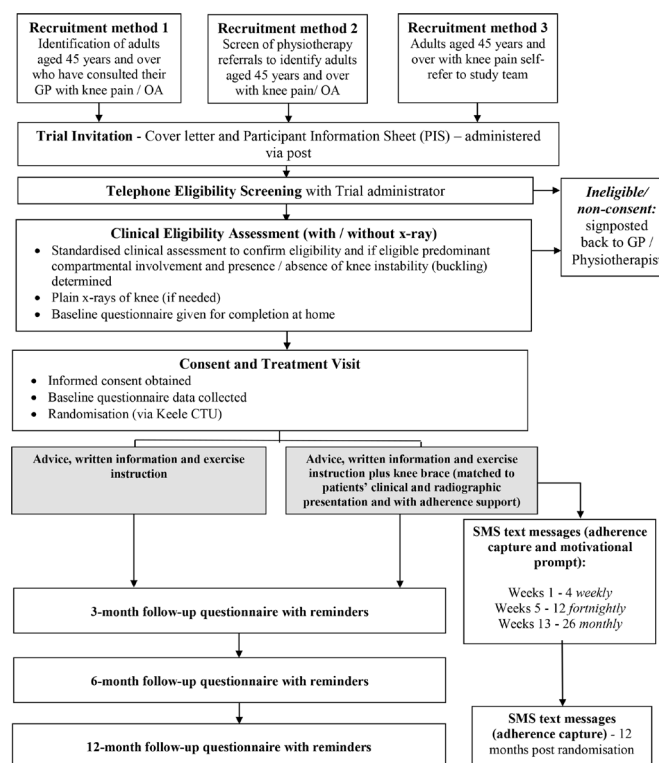
gift voucher will be sent to participants along with their 3, 6 and 12 months follow-up questionnaires.<sup>60</sup> At 6 months follow-up, the primary end point, non-responders will be approached for MDC 2 weeks after the reminder questionnaire is mailed. MDC is a shorter version of the self-report outcome questionnaire and will be used to collect the primary and limited secondary outcome measures (KOOS-5), global change scores and EQ-5D-5L, along with date of birth and gender to ensure the data are provided by the intended participant. If no response to the MDC questionnaire, we will attempt to collect minimum data over the telephone by a trial administrator. Data on self-reported adherence to brace use (in the advice, written information and exercise instruction plus knee brace intervention group) will be collected by two-way SMS text messages at 1, 2, 3, 4, 6, 8, 10, 12, 16, 20, 24 and 52 weeks. A schematic diagram of the participant flow chart is provided in figure 1.

Bracing trials show standardised effect sizes (ES) for short-term improvements in knee pain and function of 0.33–0.56 and 0.22–0.48, respectively, for tibiofemoral unloading braces<sup>24</sup> and 0.61 and 0.39, respectively, for soft neoprene sleeve braces.<sup>25</sup> Our trial is powered to detect a between-group ES of 0.35 (small-to-medium effect) in the primary outcome at 6 months with two-sided 5% significance and 90% power, which, assuming an SD of 23 as estimated from previous trial data,<sup>44</sup> equates to a minimum clinically important difference (MCID) of 8-points on the KOOS-5; an MCID value that aligns with published evidence for the tool.<sup>61</sup> We will randomise 434 patients, recruited over a period of 24 months, to allow for 20% lost to follow-up at 6 months,<sup>44 46 62</sup> (target n at 6 months=346; 173/arm). We have not inflated our sample size for therapist effects as each physiotherapist will be trained to deliver both interventions, however, the therapist will be included as a covariate in a sensitivity analysis of the treatment models to increase model power.<sup>63</sup>

## Statistical methods

A separate a priori data analysis plan will be written to describe all trial analysis. Consequently, only a brief outline is outlined below.

A Consolidated Standards of Reporting Trials flow diagram will describe the flow of participants through the study and will include reasons for trial withdrawal if given. Descriptive statistics will be used to describe the key baseline characteristics of participants at each stage of recruitment and follow-up, and by intervention arm. The primary outcome analysis will be on an intention-to-treat



**Figure 1** Participant flow and timeline. CTU, Clinical Trial Unit; GP, general practitioner; OA, osteoarthritis.



basis and will compare the primary outcome (KOOS-5) at the primary endpoint (6 month follow-up) for advice, written information, and exercise instruction plus knee bracing versus advice, written information and exercise instruction alone. Secondary analysis will include the analysis of the primary outcome at 3 and 12 months (ie, the secondary endpoints) and the secondary clinical effectiveness outcomes at 3, 6 and 12 months. Analysis of covariance will be used to model outcomes that are continuous and logistic regression for those that are dichotomous. All models will be reported after adjustment for a priori analysis covariates (as defined in the a priori analysis plan) and after imputation of missing data. Treatment effect estimates will be presented as mean differences or ORs (as appropriate) with 95% CIs. Longitudinal mixed-effects models will also be used to evaluate the treatment effect at each single time point and over time to check that results are consistent with those derived from the primary analysis.

Exploratory subgroup analyses will be performed (if numbers in each subgroup are sufficient for these analyses to be feasible) based on the presence of knee instability (buckling), predominant knee compartment involved, level of adherence and anxiety/depression. Participants will also be included in a per-protocol analysis if they meet prespecified inclusion criteria, defined fully in the a priori analysis plan. Cross-tabulation and the kappa statistic will be used to test how accurate brace allocation would have been if based on clinical judgement alone, rather than on clinical assessment findings and X-ray assessment combined. Treatment acceptability will be described using numbers and percentages. Any adverse events and protocol violations will be reported throughout the trial by intervention arm. No interim analysis will be undertaken during the trial to assess the clinical effectiveness of advice, written information and exercise instruction plus knee bracing over advice, written information and exercise instruction alone, however, an internal pilot trial phase will be conducted with prespecified progression criteria (online supplemental datafile 1).

## Economic evaluation

### Within trial economic evaluation

An economic evaluation will be undertaken alongside the trial to estimate the cost-effectiveness of advice, written information and exercise instruction plus knee bracing versus advice, written information and exercise instruction alone in the management of knee OA. An incremental cost-utility analysis will estimate cost per quality-adjusted life year (QALY) over 12 months follow-up. QALYs will be calculated from responses to the EQ-5D-5L questionnaire using the 'area under the curve' approach. The cross-walk value set to obtain utility scores, in line with current NICE recommendations<sup>64</sup> and the more recent English value set will be used in a sensitivity analysis. The base-case analysis will be from a healthcare perspective, with an additional analysis from a societal perspective taking into account out-of-pocket costs and work productivity

losses. Mean resource use (for each category of healthcare usage) and mean total costs will be calculated for all trial participants. Analysis of productivity losses will use the human capital approach, and the self-reported days of absence will be multiplied by the respondent-specific wage rate. Multiple imputation will be used to impute all missing values for the EQ-5D and total cost estimates for missing data at follow-up. Incremental cost-utility analysis will be undertaken to estimate the incremental cost per QALY gained, adjusting for baseline covariates. The robustness of the results will be explored using sensitivity analysis. Cost-effectiveness acceptability curves will also be produced to reflect the probability the intervention will be cost-effective at different cost per QALY willingness to pay thresholds.

### Model-based health economic analysis

Decision modelling, using a Markov model, will also be undertaken to extend beyond 12 months follow-up, to extrapolate costs and QALYs over a lifetime time horizon. The cost-utility analysis will be from an NHS perspective, with discounting of costs and outcomes at 3.5%. In addition to trial data, the model will be populated with data from existing literature on the natural history of symptomatic knee OA, risks associated with surgery and quality of life, and national data on all-cause mortality. The model will be subject to deterministic sensitivity analysis by changing individual parameter values and changing model assumptions, and probabilistic sensitivity analysis to simultaneously incorporate all parameter uncertainty. Cost-effectiveness planes and cost-effectiveness acceptability curves will be presented to show the probability that advice, written information and exercise instruction plus knee bracing is cost-effective at different cost/QALY thresholds.

### Nested qualitative studies

In addition to qualitative interviews undertaken in the internal pilot phase (online supplemental datafile 1), a theoretically informed qualitative study will be completed within the main trial, which builds on our previous work exploring acceptability of, and adherence to, physiotherapy-led interventions for individuals with knee OA, and barriers and facilitators to non-pharmacological interventions (exercise and physical activity) in this population.<sup>65-67</sup>

To help explain the results of the trial in terms of the comparable clinical effectiveness of interventions, a qualitative study will investigate contextual factors, and barriers and enablers to brace use in individuals with knee OA. Drawing on normalisation process theory (NPT)<sup>68-69</sup> and the theoretical domains framework (TDF),<sup>70</sup> we will investigate patient and physiotherapy perspectives and will undertake:

Semistructured interviews (face to face or telephone) with  $\leq 40$  participants postintervention (at 6 months follow-up) ( $n \leq 20$  from each treatment arm). Participants will be purposefully sampled from both treatment

arms (using data from trial questionnaires and SMS text messages) to ensure a diverse range of characteristics including age, sex, knee compartmental involvement, baseline pain severity, presence/absence of buckling, perceived overall improvement and level of adherence. The interview topic guide will explore participants' experiences of trial interventions, adherence to interventions (including barriers and enablers to brace adherence in the advice, written information and exercise instruction plus knee brace intervention arm), and impact of interventions on participants' symptoms, functioning and quality of life. Perceived harms and adverse events from interventions will also be explored. Data collection and analysis will be carried out iteratively so that emerging themes can be effectively explored in subsequent interviews.<sup>71</sup> Sampling will continue until no new themes emerge.

Semistructured interviews will be conducted with physiotherapists who delivered trial interventions (n≤16) after they have treated their final trial participant. Interviews will provide insight into experiences of implementing, embedding, accepting and integrating both advice, written information and exercise instruction and the addition of knee bracing into NHS physiotherapy services. The topic guide will cover the appropriateness of the trial training programme, physiotherapists' views of their roles in the trial in terms of delivering usual practice (advice/education/exercise prescription) but in only one treatment session, and in the advice, written information and exercise instruction plus knee bracing arm, the extra activity including using a standardised clinical assessment to identify compartment of knee affected by OA, assessment of X-rays, prescribing a brace and supporting the patient to use it, changing it where necessary, and using brief MI techniques specifically to facilitate adherence to brace use.

All interviews will be audiorecorded, transcribed verbatim, checked and anonymised for analyses. Initially, each interview transcript will be read and reread to identify and code discrete parts of the data that represent a particular concept. As analysis continues, using principles of constant comparison,<sup>71</sup> data will be closely examined for similarities and differences, and groups of words or phrases representing the same concept will be grouped into themes. Emerging codes and themes will be discussed and agreed with members of the study team (including PPIE team members) on an ongoing basis and applied to the dataset with ongoing refinement as needed. Inductive analysis (described above) will precede deductive analysis and mapping of themes to TDF or NPT constructs.<sup>68 70</sup> This layered approach enables a rich interpretative analysis to be completed as emergent issues are identified ahead of making sense of data according to theoretical constructs.<sup>68 72</sup> Data will be used to inform an implementation strategy in conjunction with Keele's Impact Accelerator Unit.

## DATA MANAGEMENT

Self-report questionnaires, SMS text messages and CRFs will form the basis of data collection. All data collected during the course of the trial will be handled and stored in line with Keele University's Data Security procedures and Standard Operating Procedures (SOPs), which are in accordance with the Data Protection Act 2018, other relevant regulations and GCP guidelines. If a participant withdraws consent from trial intervention and/or further collection of data, their data will remain on file and included in the final analysis. At the end of the trial, data will be securely archived in line with the Sponsor's procedures for a minimum of 5 years. Data held by Keele CTU will be archived in the designated Keele CTU archive facility and site data and documents will be archived at the participating sites. Following authorisation from the Sponsor, arrangements for confidential destruction will then be made.

## TRIAL ORGANISATION

The trial steering committee (TSC) met prior to ethics application in order to agree the final protocol, and will continue to meet at agreed time intervals over the course of the trial. An independent data monitoring committee approved the protocol and reviews the safety of the trial. Detailed reports focusing on interim safety, recruitment and retention are prepared by Keele CTU at approximately 6 monthly intervals. All data collection, database design, data input and cleaning, as well as trial oversight procedures, are in line with the Keele University SOPs and the conditions of the grant. Data will be centrally monitored for quality and completeness by Keele CTU.

## PUBLIC AND PATIENT INVOLVEMENT

Two patient representatives are members of the trial team and helped write the grant application and actively contributed to revising the trial protocol following CAG and Panel feedback. A 3-hour workshop was convened with five patient representatives with knee OA to discuss recruitment, participant flow, interventions (including trying on/ discussing patellofemoral, tibiofemoral unloading and neutral stabilising knee braces), outcome measures and dissemination. Comments about the trial were obtained from the general public via the interactive VoiceNorth discussion forum and specific feedback from nine VoiceNorth members (<http://www.voicenorth.org/>). As a result, changes were made to the recruitment strategy, outcome measures and the collection of information on reasons for non-adherence.

To further refine the design of the trial, a second PPIE workshop was convened in the pretrial phase to finalise the adherence-enhancing SMS intervention (eg, content of text messages). To help inform the development of the PROP OA trial protocol, we also formed, and convened two workshops with, a CAG consisting of multidisciplinary clinicians involved in the PROP OA. Our PPIE

coapplicants actively participated in these workshops which shaped the eligibility criteria, intervention content and processes of brace selection.

Internal pilot phase findings and potential changes needed to the trial will be discussed with lay members. To ensure ongoing oversight PPIE study members will attend TMG meetings, and assist in the interpretation of qualitative findings. Two independent lay members will also sit on the TSC. Finally, PPIE study members will play an important role in developing easily understandable key messages about trial findings for our dissemination strategy. With the CAG, PPIE members will inform the implementation strategy with the Impact Accelerator Unit. We have an established track record in publishing our PPIE related work.<sup>43–78</sup> All PPIE activity will follow our written framework for PPIE involvement that is based on INVOLVE guidelines,<sup>79</sup> and will be supported by our User Support Worker.

## ETHICS AND DISSEMINATION

### Ethical and regulatory considerations

This clinical trial has been designed, and will be run, in accordance with the principles of GCP. The trial involves the investigation of interventions in practice. All braces used in the trial are CE marked mass-product (not custom-made) medical devices being used for their intended purpose.

All patients will receive advice, written information and exercise instruction that aligns with best evidence recommendations from NICE.<sup>10</sup> All interventions are deemed safe, with few and minor expected adverse events (e skin irritation from knee braces, muscle soreness from exercise). Participants in both intervention arms will be able to consult for healthcare in addition to the care they receive within the PROP OA trial, and this will be recorded and analysed. Participation in the trial may involve exposure to ionising radiation in the form of plain radiography to obtain knee X-rays at baseline. Imaging procedures will be compliant with the Ionising Radiation (Medical Exposure) Regulations 2000 and the amendments in 2006 and 2011.

### Research ethics approval

This project received a favourable ethical opinion from North West Preston Research Ethics Committee (IRAS Reference: 247370; REC Reference: 19/NW/0183) and approval from the Health Research Authority (HRA) and Health and Care Research in Wales (HCRW) on (19 June 2019). The imaging protocol was reviewed prior to REC submission by an independent Medical Physics Expert and Clinical Radiation Expert.

### Protocol amendments

This is an edited version of full current protocol V.2.2 (4 March 2020). The full version of the protocol is available at <https://fundingawards.nihr.ac.uk/award/16/160/03>.

## DISSEMINATION POLICY

Our main findings on the clinical and cost-effectiveness of adding knee bracing to advice, written information and exercise instruction will have important implications for patients and the NHS. To ensure that the outputs from the research inform clinical practice, our dissemination strategy will use multiple modes of communication to reach five key audiences for this research: patients with knee pain/OA and the wider public; healthcare professionals; Clinical Commissioning Groups and commissioning organisations; external statutory bodies, patient groups and charities; academia. Keele's Impact Accelerator Unit will work close with the research team throughout the study to shape an implementation strategy and identify key innovations for adoption.

## AVAILABILITY OF DATA AND MATERIALS

Keele University is a member of the UK Reproducibility Network and committed to the principles of the UK Concordat on Open Research Data. The School of Medicine and Keele CTU have a long-standing commitment to sharing data from our studies to improve research reproducibility and to maximise benefits for patients, the wider public and the health and care system.

Metadata, including study protocol, statistical analysis plan, data dictionaries and key study documents (PIL, blank/coded CRFs, consent form), will be deposited on a publicly accessible repository. Deidentified IPD that underlie the results from this trial will be securely stored on servers approved by a government-backed cyber security scheme and made available to bona-fide researchers on reasonable request via our controlled access procedures. Unless there are exceptional circumstances, data will be available on publication of main study findings or within 18 months of study completion (whichever is earlier) and with no end date. Data requests and enquiries should be directed to [medicine.datasharing@keele.ac.uk](mailto:medicine.datasharing@keele.ac.uk). We encourage collaboration with those who collected the data, to recognise and credit their contributions.

The data generated from this trial will remain the responsibility of the Sponsor. Release of data will be subject to a data use agreement between the sponsor and the third party requesting the data. Deidentified IPD will be encrypted on transfer.

### Author affiliations

<sup>1</sup>Primary Care Centre Versus Arthritis, School of Medicine, Keele University, Keele, UK

<sup>2</sup>Faculty of Health, Psychology & Social Care, Manchester Metropolitan University, Manchester, UK

<sup>3</sup>Boston University School of Medicine, Boston, Massachusetts, USA

<sup>4</sup>Research in Osteoarthritis Manchester (ROAM), Centre for Epidemiology Versus Arthritis, Centre for Musculoskeletal Research, Institute of Inflammation and Repair, The University of Manchester, Manchester, UK

<sup>5</sup>Medical Research Council Versus Arthritis Centre for Integrated Research into Musculoskeletal Ageing, Newcastle University, Newcastle upon Tyne, UK

<sup>6</sup>Northumbria Healthcare NHS Foundation Trust, North Shields, UK

<sup>7</sup>Clinical Trials Unit, Keele University, Keele, UK

<sup>8</sup>Health Economics Unit, University of Birmingham, Birmingham, UK



<sup>9</sup>Faculty of Biology, Medicine and Health, The University of Manchester, Manchester, UK

<sup>10</sup>Henry M. Goldman School of Dental Medicine, Boston University, Boston, Massachusetts, USA

<sup>11</sup>School of Health Sciences, Division of Psychology and Mental Health, Manchester Centre for Health Psychology and Manchester Academic Health Science Centre, The University of Manchester, Manchester, UK

<sup>12</sup>Research User Group, Primary Care Centre Versus Arthritis, School of Medicine, Keele University, Keele, UK

**Acknowledgements** The PROP OA trial is supported by Keele Clinical Trials Unit and sponsored by Keele University (Sponsors office—Directorate of Research, Innovation and Engagement). We would like to acknowledge the help and support of Tina Hadley-Barrows, Lucy Huckfield, Katrina Humphreys, Richard Hodgson, Treena Larkin, Matt Parkes, Neil Porter who were involved in aspects the trial design, drafting of the operational protocol and/or initiating the study set up through to first site opening. We also thank members of the Keele Research User Group, patient representatives and members of the TSC and DMC who supported the design of the trial and who continue to work with the team. Thanks also to members of our Clinical Advisory group for their support in development of the trial interventions, namely Leela Biant, Tina Hadley-Barrows, Katrina Humphreys, Vicki Jeffrey, Treena Larkin, Claire Minshull, Tim Powell, and Samantha Watson-Smith.

**Contributors** MAH made a substantial contribution to both the conception and design of the study protocol, and drafting and revising the manuscript. She provided final approval of the version of the manuscript to be published and agrees to be accountable for the accuracy and integrity of the work. MC made a substantial contribution to both the conception and design of the study protocol. He critically revised drafts of the manuscript and provided final approval of the version of the manuscript to be published. He agreed to be accountable for the accuracy and integrity of the work. DF made a substantial contribution to both the conception and design of the study protocol. He critically revised drafts of the manuscript and provided final approval of the version of the manuscript to be published. He agreed to be accountable for the accuracy and integrity of the work. FB made a substantial contribution to both the conception and design of the study protocol. He critically revised drafts of the manuscript and provided final approval of the version of the manuscript to be published. He agreed to be accountable for the accuracy and integrity of the work. EN made a substantial contribution to both the conception and design of the study protocol. She critically revised drafts of the manuscript and provided final approval of the version of the manuscript to be published. She agreed to be accountable for the accuracy and integrity of the work. SJ made a substantial contribution to both the conception and design of the study protocol. She critically revised drafts of the manuscript and provided final approval of the version of the manuscript to be published. She agreed to be accountable for the accuracy and integrity of the work. JK made a substantial contribution to both the conception and design of the study protocol. He critically revised drafts of the manuscript and provided final approval of the version of the manuscript to be published. He agreed to be accountable for the accuracy and integrity of the work. JM made a substantial contribution to both the conception and design of the study protocol. He critically revised drafts of the manuscript and provided final approval of the version of the manuscript to be published. He agreed to be accountable for the accuracy and integrity of the work. BB made a substantial contribution to both the conception and design of the study protocol. She critically revised drafts of the manuscript and provided final approval of the version of the manuscript to be published. She agrees to be accountable for the accuracy and integrity of the work. CJ made a substantial contribution to both the conception and design of the study protocol. She critically revised drafts of the manuscript and provided final approval of the version of the manuscript to be published. She agreed to be accountable for the accuracy and integrity of the work. NEF made a substantial contribution to both the conception and design of the study protocol. She critically revised drafts of the manuscript and provided final approval of the version of the manuscript to be published. She agreed to be accountable for the accuracy and integrity of the work. KD made a substantial contribution to both the conception and design of the study protocol. She critically revised drafts of the manuscript and provided final approval of the version of the manuscript to be published. She agreed to be accountable for the accuracy and integrity of the work. CM made a substantial contribution to both the conception and design of the study protocol. He critically revised drafts of the manuscript and provided final approval of the version of the manuscript to be published. He agreed to be accountable for the accuracy and integrity of the work. CI made a substantial contribution to both the conception and design of the study protocol. She critically revised drafts of the manuscript and provided final approval of the version of the manuscript to be published. She agreed to be accountable for the accuracy and

integrity of the work. AS made a substantial contribution to both the conception and design of the study protocol. He critically revised drafts of the manuscript and provided final approval of the version of the manuscript to be published. He agreed to be accountable for the accuracy and integrity of the work. SL made a substantial contribution to both the conception and design of the study protocol. She critically revised drafts of the manuscript and provided final approval of the version of the manuscript to be published. She agreed to be accountable for the accuracy and integrity of the work. NH made a substantial contribution to the design of the study protocol. She critically revised drafts of the manuscript and provided final approval of the version of the manuscript to be published. She agreed to be accountable for the accuracy and integrity of the work. LH made a substantial contribution to the design of the study protocol. She critically revised drafts of the manuscript and provided final approval of the version of the manuscript to be published. She agreed to be accountable for the accuracy and integrity of the work. HW made a substantial contribution to both the conception and design of the study protocol. She critically revised drafts of the manuscript and provided final approval of the version of the manuscript to be published. She agreed to be accountable for the accuracy and integrity of the work. RB made a substantial contribution to the design of the study protocol. She critically revised drafts of the manuscript and provided final approval of the version of the manuscript to be published. She agreed to be accountable for the accuracy and integrity of the work. HH made a substantial contribution to the design of the study protocol. She critically revised drafts of the manuscript and provided final approval of the version of the manuscript to be published. She agreed to be accountable for the accuracy and integrity of the work. MM made a substantial contribution to both the conception and design of the study protocol. She critically revised drafts of the manuscript and provided final approval of the version of the manuscript to be published. She agreed to be accountable for the accuracy and integrity of the work. GS made a substantial contribution to the design of the study protocol. She critically revised drafts of the manuscript and provided final approval of the version of the manuscript to be published. She agrees to be accountable for the accuracy and integrity of the work. DH made a substantial contribution to the design of the study protocol. He critically revised drafts of the manuscript and provided final approval of the version of the manuscript to be published. He agreed to be accountable for the accuracy and integrity of the work. EA made a substantial contribution to the design of the study protocol. She critically revised drafts of the manuscript and provided final approval of the version of the manuscript to be published. She agrees to be accountable for the accuracy and integrity of the work. GP made a substantial contribution to both the conception and design of the study protocol, and drafting and revising the manuscript. He provided final approval of the version of the manuscript to be published and agreed to be accountable for the accuracy and integrity of the work.

**Funding** This project is funded by the NIHR Health Technology Assessment programme (16/160/03). CM is funded by the National Institute for Health Research (NIHR) Applied research Collaborations (West Midlands), the NIHR School for Primary Care Research and an NIHR Research Professorship in General Practice (NIHR-RP-2014-04-026). KD is part funded by the National Institute for Health Research (NIHR) Applied Research Centre (ARC) West Midlands (NIHR200165) and is an NIHR Senior Investigator (NIHR200259). NEF was funded by an NIHR Research Professorship (NIHR-RP-2011-015) and is an NIHR Senior Investigator. CJ is part funded by the NIHR Applied Research Centre (ARC) West Midlands (NIHR200165). The trial described in the manuscript has had no financial support from commercial sources, however, a proportion of the braces supplied by Ossur are being donated and we have received a discounted price on braces supplied by other companies.

**Disclaimer** The views expressed are those of the author(s) and not necessarily those of the NHS, the NIHR or the Department of Health and Social Care.

**Competing interests** None declared.

**Patient consent for publication** Not required.

**Provenance and peer review** Not commissioned; peer reviewed for ethical and funding approval prior to submission.

**Supplemental material** This content has been supplied by the author(s). It has not been vetted by BMJ Publishing Group Limited (BMJ) and may not have been peer-reviewed. Any opinions or recommendations discussed are solely those of the author(s) and are not endorsed by BMJ. BMJ disclaims all liability and responsibility arising from any reliance placed on the content. Where the content includes any translated material, BMJ does not warrant the accuracy and reliability of the translations (including but not limited to local regulations, clinical guidelines, terminology, drug names and drug dosages), and is not responsible for any error and/or omissions arising from translation and adaptation or otherwise.



**Open access** This is an open access article distributed in accordance with the Creative Commons Attribution 4.0 Unported (CC BY 4.0) license, which permits others to copy, redistribute, remix, transform and build upon this work for any purpose, provided the original work is properly cited, a link to the licence is given, and indication of whether changes were made. See: <https://creativecommons.org/licenses/by/4.0/>.

#### ORCID iDs

Melanie A Holden <http://orcid.org/0000-0003-0374-2862>

David Felson <http://orcid.org/0000-0002-2668-2447>

#### REFERENCES

- 1 Peat G, McCarney R, Croft P. Knee pain and osteoarthritis in older adults: a review of community burden and current use of primary health care. *Ann Rheum Dis* 2001;60:91–7.
- 2 Kassebaum NJ, Arora M, Barber RM, et al. Global, regional, and national disability-adjusted life-years (DALYs) for 315 diseases and injuries and healthy life expectancy (HALE), 1990–2015: a systematic analysis for the global burden of disease study 2015. *The Lancet* 2016;388:1603–58.
- 3 Pabinger C, Lothaller H, Geissler A. Utilization rates of knee-arthroplasty in OECD countries. *Osteoarthritis Cartilage* 2015;23:1664–73.
- 4 Kurtz SM, Lau E, Ong KL, et al. Universal health insurance coverage in Massachusetts did not change the trajectory of arthroplasty use or costs. *Clin Orthop Rel Res* 2016;474:1090–8.
- 5 Culliford DJ, Maskell J, Beard DJ, et al. Temporal trends in hip and knee replacement in the United Kingdom: 1991 to 2006. *J Bone Joint Surg Br* 2010;92:130–5.
- 6 Nemes S, Rolfson O, W-Dahl A, et al. Historical view and future demand for knee arthroplasty in Sweden. *Acta Orthop* 2015;86:426–31.
- 7 Yu D, Jordan KP, Bedson J, et al. Population trends in the incidence and initial management of osteoarthritis: age-period-cohort analysis of the clinical practice research Datalink, 1992–2013. *Rheumatology* 2017;56:1902–17.
- 8 Hilgsmann M, Cooper C, Arden N, et al. Health economics in the field of osteoarthritis: an expert's consensus paper from the European Society for Clinical and Economic Aspects of Osteoporosis and Osteoarthritis (ESCEO). *Semin Arthritis Rheum* 2013;43:303–13.
- 9 Puig-Junoy J, Ruiz Zamora A. Socio-Economic costs of osteoarthritis: a systematic review of cost-of-illness studies. *Semin Arthritis Rheum* 2015;44:531–41.
- 10 National Institute for Health and Care Excellence. *Osteoarthritis: care and management in adults. NICE clinical guideline 177*. London: Royal College of Physicians, 2014.
- 11 Bruyère O, Cooper C, Pelletier J-P, et al. An algorithm recommendation for the management of knee osteoarthritis in Europe and internationally: a report from a task force of the European Society for clinical and economic aspects of osteoporosis and osteoarthritis (ESCEO). *Semin Arthritis Rheum* 2014;44:253–63.
- 12 McAlindon TE, Bannuru RR, Sullivan MC, et al. OARS guidelines for the non-surgical management of knee osteoarthritis. *Osteoarthritis Cartilage* 2014;22:363–88.
- 13 Hochberg MC, Altman RD, April KT, et al. American College of rheumatology 2012 recommendations for the use of nonpharmacologic and pharmacologic therapies in osteoarthritis of the hand, hip, and knee. *Arthritis Care Res* 2012;24:465–74.
- 14 Jevsevar DS. Treatment of osteoarthritis of the knee. In: *Evidence-based guideline*. 2nd edn. American Academy of Orthopaedic Surgeons (AAOS), 2013. <https://www.aaos.org/research/guidelines/treatmentofosteoarthritisofthekneeguideline.pdf>
- 15 Fernandes L, Hagen KB, Bijlsma JWJ, et al. EULAR recommendations for the non-pharmacological core management of hip and knee osteoarthritis. *Ann Rheum Dis* 2013;72:1125–35.
- 16 Newberry SJ, FitzGerald J, SooHoo NF. *Treatment of osteoarthritis of the knee: an update review. Comparative effectiveness reviews No. 190*. Rockville, MD: Agency for Healthcare Research and Quality, 2017. <https://www.ncbi.nlm.nih.gov/pubmedhealth/PMH0096384/>
- 17 Brouwer RW, Jakma TSC, Verhagen AP, et al. Braces and orthoses for treating osteoarthritis of the knee. *Cochrane Database Syst Rev* 2005:CD004020.
- 18 Duivenvoorden T, Brouwer RW, van Raaij TM, et al. Braces and orthoses for treating osteoarthritis of the knee. *Cochrane Database Syst Rev* 2015;16:CD004020.
- 19 Kirkley A, Webster-Bogaert S, Litchfield R, et al. The effect of bracing on varus gonarthrosis. *J Bone Joint Surg Am* 1999;81:539–48.
- 20 Brouwer RW, van Raaij TM, Verhaar JAN, et al. Brace treatment for osteoarthritis of the knee: a prospective randomized multi-centre trial. *Osteoarthritis Cartilage* 2006;14:777–83.
- 21 van Raaij TM, Reijman M, Brouwer RW, et al. Medial knee osteoarthritis treated by insoles or braces: a randomized trial. *Clin Orthop Relat Res* 2010;468:1926–32.
- 22 Müller-Rath R, Cho HY, Siebert CH, et al. Clinical and gait analytical investigation of valgus knee bracing in therapy for medial degenerative joint disease of the knee. *Z Orthop Unfall* 2011;149:160–5.
- 23 Sattari S, Ashraf AR. Comparison the effect of 3 point valgus stress knee support and lateral wedge insoles in medial compartment knee osteoarthritis. *Iran Red Crescent Med J* 2011;13:624–8.
- 24 Moyer RF, Birmingham TB, Bryant DM, et al. Valgus bracing for knee osteoarthritis: a meta-analysis of randomized trials. *Arthritis Care Res* 2015;67:493–501.
- 25 Cudejko T, van der Esch M, van der Leeden M, et al. Effect of soft braces on pain and physical function in patients with knee osteoarthritis: systematic review with meta-analyses. *Arch Phys Med Rehabil* 2018;99:153–63.
- 26 Mine K, Nakayama T, Milanese S, et al. The effectiveness of braces and orthoses for patients with knee osteoarthritis: a systematic review of Japanese-language randomised controlled trials. *Prosthet Orthot Int* 2017;41:115–26.
- 27 Healy A, Farmer S, Pandyan A, et al. A systematic review of randomised controlled trials assessing effectiveness of prosthetic and orthotic interventions. *PLoS One* 2018;13:e0192094.
- 28 Beaudreuil J. Orthoses for osteoarthritis: a narrative review. *Ann Phys Rehabil Med* 2017;60:102–6.
- 29 Berry H, Black C, Fernandes L. Controlled trial of a knee support (Genutrain) in patients with osteoarthritis of the knee. *Eur J Rheumatol Inflamm* 1992;12:30–4.
- 30 Horlick SG, Loomer RL. Valgus knee bracing for medical Gonarthrosis. *Clin J Sport Med* 1993;3:251–5.
- 31 Pajareya K, Chadchavalpanichaya N, Timdang S. Effectiveness of an elastic knee sleeve for patients with knee osteoarthritis: a randomized single-blinded controlled trial. *J Med Assoc Thai* 2003;86:535–42.
- 32 Mazzuca SA, Page MC, Meldrum RD, et al. Pilot study of the effects of a heat-retaining knee sleeve on joint pain, stiffness, and function in patients with knee osteoarthritis. *Arthritis Rheum* 2004;51:716–21.
- 33 Richards JD, Sanchez-Ballester J, Jones RK, et al. A comparison of knee braces during walking for the treatment of osteoarthritis of the medial compartment of the knee. *J Bone Joint Surg Br* 2005;87-B:937–9.
- 34 Draganich L, Reider B, Rimington T, et al. The effectiveness of self-adjustable custom and off-the-shelf bracing in the treatment of varus gonarthrosis. *J Bone Joint Surg Am* 2006;88:2645–52.
- 35 Keyaki K, Toda Y, Noriko T. The comparison of efficacy on ADL between two types of knee sleeves for the patients with osteoarthritis of the knee. *Jpn J Phys Ther* 2010;44:1027–31.
- 36 Toda Y, Tsukimura N, Koji K. Comparison of clinical effects in patients with unilateral symptomatic osteoarthritis of the knee who wore bilateral soft orthotic devices or a device on the symptomatic knee only. *Jpn J Joint Dis* 2010;29:223–9.
- 37 Hunter D, Gross KD, McCree P, et al. Realignment treatment for medial tibiofemoral osteoarthritis: randomised trial. *Ann Rheum Dis* 2012;71:1658–65.
- 38 Toda Y, Tsukimura N, Koji K. Efficacy of knee sleeves with medial compartment pad for patients with medial compartment osteoarthritis of the knee. *Rinshouseikeigeka* 2012;47:597–602.
- 39 Jones RK, Nester CJ, Richards JD, et al. A comparison of the biomechanical effects of valgus knee braces and lateral wedged insoles in patients with knee osteoarthritis. *Gait Posture* 2013;37:368–72.
- 40 Callaghan MJ, Parkes MJ, Hutchinson CE, et al. A randomised trial of a brace for patellofemoral osteoarthritis targeting knee pain and bone marrow lesions. *Ann Rheum Dis* 2015;74:1164–70.
- 41 Cherian JJ, Bhave A, Kapadia BH, et al. Strength and functional improvement using pneumatic brace with extension assist for end-stage knee osteoarthritis: a prospective, randomized trial. *J Arthroplasty* 2015;30:747–53.
- 42 Yu SP, Williams M, Eyles JP, et al. Effectiveness of knee bracing in osteoarthritis: pragmatic trial in a multidisciplinary clinic. *Int J Rheum Dis* 2016;19:279–86.
- 43 Foster NE, Konstantinou K, Lewis M, et al. The clinical and cost-effectiveness of stratified care for patients with sciatica: the SCOPIC randomised controlled trial protocol (ISRCTN75449581). *BMC Musculoskelet Disord* 2017;18:172.
- 44 Hay EM, Dziedzic K, Foster NE. Clinical osteoarthritis and joint pain in older people: optimal management in primary care.



- NIHR programme grant for applied research final report, RP-PG-0407-10386; 2018.
- 45 Foster NE, Bishop A, Bartlam B, *et al.* Evaluating acupuncture and standard care for pregnant women with back pain (ease back): a feasibility study and pilot randomised trial. *Health Technol Assess* 2016;20:1–236.
  - 46 Hay EM, Foster NE, Thomas E, *et al.* Effectiveness of community physiotherapy and enhanced pharmacy review for knee pain in people aged over 55 presenting to primary care: pragmatic randomised trial. *BMJ* 2006;333:995.
  - 47 Phillips S, Li CS, Phillips M, *et al.* Treatment of osteoarthritis of the knee with bracing: a scoping review. *Orthop Rev* 2016;8:6256.
  - 48 Borrelli B, Riekert KA, Weinstein A, *et al.* Brief motivational interviewing as a clinical strategy to promote asthma medication adherence. *J Allergy Clin Immunol* 2007;120:1023–30.
  - 49 Roos EM, Roos HP, Lohmander LS, *et al.* Knee Injury and Osteoarthritis Outcome Score (KOOS)--development of a self-administered outcome measure. *J Orthop Sports Phys Ther* 1998;28:88–96.
  - 50 Hawker GA, Davis AM, French MR, *et al.* Development and preliminary psychometric testing of a new OA pain measure--an OARSI/OMERACT initiative. *Osteoarthritis Cartilage* 2008;16:409–14.
  - 51 Nguyen U-SDT, Felson DT, Niu J, *et al.* The impact of knee instability with and without buckling on balance confidence, fear of falling and physical function: the multicenter osteoarthritis study. *Osteoarthritis Cartilage* 2014;22:527–34.
  - 52 Pham T, Van Der Heijde D, Lassere M, *et al.* Outcome variables for osteoarthritis clinical trials: the OMERACT-OARSI set of Responder criteria. *J Rheumatol* 2003;30:1648–54.
  - 53 Pham T, van der Heijde D, Altman RD, *et al.* OMERACT-OARSI initiative: osteoarthritis research Society international set of Responder criteria for osteoarthritis clinical trials revisited. *Osteoarthritis Cartilage* 2004;12:389–99.
  - 54 Hurtig-Wennlöf A, Hagströmer M, Olsson LA. The International physical activity questionnaire modified for the elderly: aspects of validity and feasibility. *Public Health Nutr* 2010;13:1847–54.
  - 55 Fries JF, Cella D, Rose M, *et al.* Progress in assessing physical function in arthritis: PROMIS short forms and computerized adaptive testing. *J Rheumatol* 2009;36:2061–6.
  - 56 Hahn EA, Devellis RF, Bode RK, *et al.* Measuring social health in the patient-reported outcomes measurement information system (PROMIS): item bank development and testing. *Qual Life Res* 2010;19:1035–44.
  - 57 Lorig K, Chastain RL, Ung E, *et al.* Development and evaluation of a scale to measure perceived self-efficacy in people with arthritis. *Arthritis Rheum* 1989;32:37–44.
  - 58 Sekhon M, Cartwright M, Francis JJ. Development of a theory-informed questionnaire to assess the acceptability of healthcare interventions: application of pre-validation methods. (personal communication).
  - 59 EuroQol Group. EuroQol--a new facility for the measurement of health-related quality of life. *Health Policy* 1990;16:199–208.
  - 60 Brueton VC, Tierney J, Stenning S, *et al.* Strategies to improve retention in randomised trials. *Cochrane Database Syst Rev* 2013;12:MR000032.
  - 61 Roos EM, Lohmander LS. The knee injury and osteoarthritis outcome score (KOOS): from joint injury to osteoarthritis. *Health Qual Life Outcomes* 2003;1:64.
  - 62 Foster NE, Thomas E, Barlas P, *et al.* Acupuncture as an adjunct to exercise based physiotherapy for osteoarthritis of the knee: randomised controlled trial. *BMJ* 2007;335:436.
  - 63 Kahan BC, Morris TP. Assessing potential sources of clustering in individually randomised trials. *BMC Med Res Methodol* 2013;13:58.
  - 64 National Institute for Health and Care Excellence. Position statement on use of the EQ-5D-5L valuation set. NICE, 2017. Available: [https://www.nice.org.uk/Media/Default/About/what-we-do/NICE-guidance/NICE-technology-appraisal-guidance/eq5d5l\\_nice\\_position\\_statement.pdf](https://www.nice.org.uk/Media/Default/About/what-we-do/NICE-guidance/NICE-technology-appraisal-guidance/eq5d5l_nice_position_statement.pdf) [Accessed 18 July 2018].
  - 65 Holden MA, Nicholls EE, Young J, *et al.* UK-based physical therapists' attitudes and beliefs regarding exercise and knee osteoarthritis: Findings from a mixed-methods study. *Arthritis Rheum* 2009;61:1511–21.
  - 66 Holden MA, Nicholls EE, Young J, *et al.* Exercise and physical activity in older adults with knee pain: a mixed methods study. *Rheumatology* 2015;54:413–23.
  - 67 Moore AJ, Holden MA, Foster NE, *et al.* Therapeutic alliance facilitates adherence to physiotherapy-led exercise and physical activity for older adults with knee pain: a longitudinal qualitative study. *J Physiother* 2020;66:45–53.
  - 68 May CR, Mair F, Finch T, *et al.* Development of a theory of implementation and integration: normalization process theory. *Implement Sci* 2009;4:29.
  - 69 Gallacher K, May CR, Montori VM, *et al.* Understanding patients' experiences of treatment burden in chronic heart failure using normalization process theory. *Ann Fam Med* 2011;9:235–43.
  - 70 Michie S, Johnston M, Abraham C, *et al.* Making psychological theory useful for implementing evidence based practice: a consensus approach. *Qual Saf Health Care* 2005;14:26–33.
  - 71 Charmaz K. *Constructing grounded theory: a practical guide through qualitative analysis*. London: Sage, 2006.
  - 72 Plano Clark VL, Schumacher K, West C, *et al.* Practices for embedding an interpretive qualitative approach within a randomized clinical trial. *J Mix Methods Res* 2013;7:219–42.
  - 73 Strauss VY, Carter P, Ong BN. Arthritis Research UK Research Users' Group. Public priorities for joint pain research: results from a general population survey. *Rheumatology* 2012;51:2075–82.
  - 74 Jinks C, Ong BN, O'Neill TJ. The Keele community knee pain Forum: action research to engage with stakeholders about the prevention of knee pain and disability. *BMC Musculoskelet Disord* 2009;10:85.
  - 75 Gooberman-Hill R, Jinks C, Bouças SB, *et al.* Designing a placebo device: involving service users in clinical trial design. *Health Expect* 2013;16:e100–10.
  - 76 Grime J, Dudley B. Developing written information on osteoarthritis for patients: facilitating user involvement by exposure to qualitative research. *Health Expect* 2011;17:164–73.
  - 77 Jinks C, Bird J. On behalf of the Keele research users group and knee pain forum. working together in joint pain research. In: *INVOLVE Conference*, 2008. <http://www.invo.org.uk/posttypeconference/working-together-in-joint-pain-research/>
  - 78 Jinks C, Carter P, Rhodes C, *et al.* Patient and public involvement in primary care research - an example of ensuring its sustainability. *Res Involv Engagem* 2016;2:1.
  - 79 INVOLVE. *Public involvement in research: values and principles framework*. INVOLVE: Eastleigh, 2015.

**SUPPLEMENTARY DATAFILE 1. INTERNAL PILOT**

An internal pilot will be completed to enable us to check our assumptions about the sample size and to test key trial processes and logistical issues including recruitment, intervention fidelity, adherence to brace use, follow-up and retention, and outcome measurement.

**Objectives**

Specific objectives of the internal pilot are to:

- 1) Check the numbers of eligible patients and rate of recruitment overall per month, per site per month, and per recruitment method (identification of General Practice consultants, screen of physiotherapy referrals, self-referral in the community following awareness raising)
- 2) Explore intervention fidelity and participant adherence to brace use
- 3) Check the trial retention rate

**Methods**

The internal pilot will last for 9 months, commencing from the start of recruitment (month 7 of the study timeline). All 4 sites will be included within the internal pilot, and the data collection methods used will be as per those of the full trial (as described above, and with an objective measure of brace adherence if deemed feasible within the pre-trial phase).

**Data collection**

Data from the following sources may be used within the internal pilot phase: telephone eligibility screening case report form; baseline, 3 month follow-up questionnaires (where available); text messaging (brace adherence data - advice, written information, and exercise instruction plus knee brace only); physiotherapist case report forms; recruitment database; follow-up database; adverse event log; preliminary qualitative interviews with participants and physiotherapists.

***Internal pilot qualitative study***

Based on best practice guidance,<sup>s1</sup> the aims of the qualitative study within the internal pilot are to investigate: a) the acceptability of trial procedures and interventions; b) adherence to interventions among participants (including barriers and enablers to brace use in individuals in the advice, written information, and exercise instruction plus knee brace intervention arm); and c) barriers and enablers to successful delivery of interventions among trial physiotherapists. We will draw on Normalisation Process Theory (NPT)<sup>s2</sup> to investigate the work required to deliver and adhere to bracing in the trial,

and to understand treatment burden.<sup>s3</sup> We will draw on the Theoretical Domains Framework (TDF)<sup>s4</sup> to understand behavioural determinants of participant adherence to, and physiotherapist delivery of, interventions. We will undertake:

- Semi-structured one-to-one interviews with up to 20 trial participants (n≤10 in each intervention arm) at 3-months follow-up
- Semi-structured one-to-one telephone interviews with physiotherapists who have delivered trial interventions within the internal pilot phase (n=up to 10).

The findings will be used to inform the decision to progress to the main trial, identify necessary changes to the trial processes or interventions for the main trial, and to inform on-going physiotherapy training and monitoring within the main trial.

### **Outcomes**

Outcomes of interest for the internal pilot include:

1. Numbers of adults over 45 years with knee pain identified (per site; per recruitment method (including each awareness raising method employed); overall).
2. Number of individuals screened, number and reasons for ineligibility/exclusion/declining participation at telephone and clinical screening stage, and consent/randomisation rates (per site; per recruitment method; overall).
3. Retention and follow-up rates at 3 months (per site; overall).
4. Intervention fidelity measured by number of participants who have received the interventions per protocol, and reasons for any protocol non-adherence (including number of treatment sessions provided, content of treatment sessions, crossover, and off-protocol intervention (including co-interventions sought from participants)) (per site; overall).
5. Brace adherence in those randomised to receive advice, written information, and exercise instruction plus knee brace, measured by self-report via SMS.
6. Relative distribution of most severely affected compartment (both arms) and brace type provided (advice, written information, and exercise instruction plus knee brace intervention arm only).
7. Patient and physiotherapist perceptions of acceptability of trial procedures and interventions.
8. Barriers and enablers to interventions among participants.
9. Barriers and enablers to successful delivery of interventions among trial physiotherapists.



### Sample size

We anticipate that approximately 32 participants in the advice, written information, and exercise instruction plus knee brace intervention arm will have 3 month data in the internal pilot, hence we can estimate the proportion of patients adhering to braces with at least 95% confidence and a 20% margin of error, assuming adherence and fidelity rate of 50% as a worst case scenario for desired precision.<sup>s5</sup> As other important estimates of recruitment and follow-up will be derived from participants with data in both intervention arms, their estimated precision in the internal pilot study will be greater than that for adherence and intervention fidelity (which is estimated from the advice, written information, and exercise instruction plus knee brace intervention arm only).

### Progression criteria

A success criteria traffic-light system relating to the internal pilot trial objectives will be used to inform whether we ‘stop’ ‘proceed’ or ‘proceed but with protocol amendments’ to the full trial.<sup>s5</sup> These criteria are shown in the table below and will be finalised with the Trial Steering Committee (TSC) and funder in the pre-trial phase.<sup>s5</sup> We recognise the arbitrary nature of these cut-offs, however having them in place will allow us to identify any issues that are addressable in going forward to a main trial.<sup>s5</sup> Qualitative findings will also be available to the TMG, TSC and funder at the time of decision making regarding progression of the pilot trial. These will be used to help understand the findings of the internal pilot and will be used to help make the final decision as to whether we should stop, proceed, or proceed but with protocol amendments to the full trial.

### Progression criteria for internal pilot

	Proceed to main trial	Proceed to main trial with protocol amendments	Do not proceed to main trial
<b>Recruitment</b> <i>In months 7-9 of recruitment:</i>	Site has recruited over 4 participants per month; recruited 19 participants per month overall	Site has recruited 3-4 participants per month; recruited 12-18 participants per month overall	Site has recruited fewer than 3 participants per month; recruited fewer than 12 participants per month overall
<b>Intervention fidelity</b>	Interventions delivered per protocol for at least 75% of participants (per site; overall)	Interventions delivered per protocol for 45-75% of participants (per site; overall)	Interventions delivered per protocol for fewer than 45% of participants (per site; overall)

<b>Adherence to brace use</b> (advice, written information, and exercise instruction plus knee brace arm only)	At least 75% of participants reporting minimal level of brace adherence at 3 months* (per site; overall)	Between 45-74% of participants reporting minimal level of brace adherence at 3 months* (per site; overall)	Fewer than 45% of participants reporting minimal level of brace adherence at 3 months* (per site; overall)
<b>Retention and follow-up at 3 months</b>	At least 75% retention and follow-up at 3 months (per site; overall)	Between 50-74% retention and follow-up at 3 months (per site; overall)	Fewer than 50% retention and follow-up at 3 months (per site; overall)

\*Minimal level of brace adherence: wearing the brace for 1 hour on two or more days per week

## References

- s1. O'Cathain A, Hoddinott P, Lewin S, et al. Maximising the impact of qualitative research in feasibility studies for randomised controlled trials: guidance for researchers. *Trials* 2015;16:O88.
- s2. May CR, Mair F, Finch T, et al. Development of a theory of implementation and integration: Normalization Process Theory. *Implement Sci* 2009;4:29.
- s3. Gallacher K, May CR, Montori VM, Mair FS. Understanding patients' experiences of treatment burden in chronic heart failure using normalization process theory. *Ann Fam Med* 201;9:235-243.
- s4. Michie S, Johnston M, Abraham C, Lawton R, Parker D, Walker A, "Psychological Theory" Group. Making psychological theory useful for implementing evidence based practice: a consensus approach. *Qual Safety Health Care* 2005;14:26-33.
- s5. Avery KN, Williamson PR, Gamble C, et al. Informing efficient randomised controlled trials: exploration of challenges in developing progression criteria for internal pilot studies. *BMJ Open*. 2017;7:e013537.





## Knee Exercises

The following exercise programme is designed to increase the movement in your knee joint, strengthen the muscles that support your knee, and improve your balance. Always start any exercise programme very gently. A slight increase in pain is not uncommon during the first 1-2 weeks, since it is normal to feel a generalised ache or fatigue in the muscles you have been exercising. If you experience severe or persistent pain beyond this time point, stop the exercise programme and seek advice from your GP.

### How often should I exercise?

Try to do the exercise programme 2 or 3 times per week, waiting for at least 48 hours between sessions.

Try to complete **8-12 repetitions of each exercise. Repeat the same exercise 1-3 times.** Rest for a few minutes before you move onto the next exercise. Build up the number of exercise repetitions you do, and the number of times you complete each exercise gradually.

If you feel a sharp pain whilst you are doing any of the exercises, then this might mean that you are not doing them correctly. Stop and rest until the pain has eased. Read the instructions again, and try again.

### How long should I continue for?

It would be beneficial for you and your knee if you are able to continue these exercises and make them a part of your daily routine.



1. Sit on a chair with your feet on the floor.  
Bend your knee as much as possible and then straighten it.



2. Sit on a chair.  
Pull your toes up, tighten your thigh muscle and straighten your knee. Hold for approximately 10-30 seconds then slowly relax your leg. Bend your knee as much as possible and then straighten it.





3. Stand in front of a table or chair holding onto it with both hands.

Slowly crouch keeping your back straight and heels on the floor. Stay down for approximately 10-30 seconds and feel the stretching in your buttocks and the front of your thighs.



4. Sitting with your arms crossed.

Stand up and then sit down slowly on a chair. (This can be made easier by using a higher chair, and using your arms to help if you need to. This can be made harder by using a lower chair.)



5. Stand straight. Take a step forwards and take the weight onto the front leg. Push off your front leg bringing your legs back together. Repeat with the other leg.



6. Stand in front of a 20 - 40 cm step.

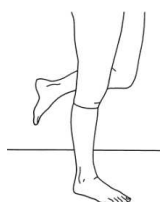
Step up with one leg leading and then repeat with the other leg leading.



7. On your bed, lying on your back. Lift your leg towards your chest. Place your hands behind the knee. Gently pull your leg towards your chest. Feel the stretch behind your thigh. Hold for 10-30 seconds.



8. On your bed, lying on your side with your legs bent. Take hold of the ankle of your upper leg. Gently draw your foot towards your buttock. Feel the stretch in the front of your thigh. Hold for 10-30 seconds to the point of tightness or slight discomfort.



9. Stand on one leg. Try and keep your balance for approximately 10-30 seconds, or even up to 1 minute if you can. (This can be made easier by holding your arms out to the side. This can be made harder by crossing your arms, or shutting your eyes.)