

1 **TITLE: Physical activity and fasting glucose in adults with abnormal glucose**
2 **metabolism: findings from two independent cross-sectional studies in China**

3
4 Lirong Lu ^{1,*}, Ying Chen ^{2,*}, Yamei Cai ^{3,*}, Tao Chen ^{3,4}, Yi Huang ¹, Huaxi Meng ¹, Dahai
5 Yu ⁵

6
7 1. Department of Endocrinology, The First Affiliated Hospital of Guangxi University
8 of Chinese Medicine, Guangxi Zhuang Autonomous Region 530023, China

9 2. Department of Health and Environmental Sciences, Xi'an Jiaotong-Liverpool
10 University, Suzhou Jiangsu 215123, China

11 3. Jiangsu Province Hospital on Integration of Chinese and Western Medicine,
12 Nanjing 210028, China

13 4. Liverpool School of Tropical Medicine, Pembroke Place, Liverpool L3 5QA, UK

14 5. School of Medicine, Keele University, Staffordshire, the United Kingdom, ST5
15 5BG

16 * These authors contributed equally as first author

17
18 Corresponding Author:

19 Dr. Dahai Yu

20 Primary Care Centre Versus Arthritis

21 School of Medicine

22 Keele University

23 Keele ST5 5BG, UK

24 Email: d.yu@keele.ac.uk

25 Tel: +44 (0)1782 734891

26

27

28

29

30

31

32

33

34

35

36 **Abstract**

37 **Background.** Relationship between physical activity and fasting glucose in people
38 with abnormal glucose metabolism is not well-known. This study was to investigate
39 dose-response association between physical activity (PAT) and fasting glucose
40 from two independent surveys among Chinese adults with abnormal glucose
41 metabolism.

42 **Methods.** 9419 adults with abnormal glucose metabolism from two independent
43 surveys among Chinese adults were analyzed. Demographics, level of fasting
44 glucose and PAT (in Met Score) were measured. Dose-response relationship
45 between fasting glucose and PAT was assessed by natural cubic spline model.
46 Certain threshold point was identified, and linear regression models were then
47 used within each threshold interval to assess the liner relationship functions.
48 Models were adjusted for confounding factors and were stratified in subgroup
49 analyses by the main population characteristics including survey site, gender and
50 age-group.

51 **Results.** Overall the relationship between PAT and fasting glucose was not in a
52 linear association (Linearity test: $p < 0.0001$). Level of fasting glucose was not
53 associated with amount of PAT until a threshold point (square-rooted Met Score
54 66.6 (original Met score: 4,436 MET-minutes per week), 95% confidence intervals
55 (65.2–69.3 (4,251-4,802 MET-minutes per week)). After this threshold, an inverse
56 association was observed: each increase of every standard deviation of square-
57 rooted Met Score 29.8 (888 MET-minutes per week) was associated with a 0.25
58 mmol/L decrease in fasting glucose, with adjustment for confounding factors. The
59 patterns of relationship were tested to be consistent in subgroup analyses by
60 survey site, gender and age group.

61 **Conclusions.** Our study indicated that among adults with abnormal glucose
62 metabolism the level of fasting glucose was only inversely associated with square-
63 rooted Met Score beyond a certain square-rooted Met Score amount.

64 **Key words:** Physical activity; glucose; metabolism disorder; Chinese; Cross-
65 sectional

66

67

68

69 **Introduction**

70 Metabolism-related disease is associated with substantial health and economic
71 burdens in human society, and the prevalence shows a continually increasing trend
72 in both industrializing and industrialized countries [1]. Obesity is found as a
73 significant risk factor [2], and many other potential risk factors have also been
74 suggested in the emerging literature including physical inactivity [3, 4]. Both clinical
75 and epidemiological studies have shown that adults with diabetes are associated
76 with lower physical activity, compared with nondiabetic counterparts [5, 6]. Also,
77 in adult populations some research has suggested that the physical activity is
78 inversely associated with blood glucose level, independent of obesity [7]. However,
79 findings on the association between physical activity and glucose in the general
80 population has not yet been conclusive across the current literature which may be
81 due to several aspects such as study design, study population and analytical
82 method [8, 9]. In addition, the association between physical activity and fasting
83 glucose level has not been fully investigated in metabolic syndrome (MS). The
84 objective of the current study was to investigate the detailed relationship between
85 amount of physical activity and level of fasting glucose among Chinese adults with
86 abnormal glucose metabolism (MS or type 2 diabetes) in two large independent
87 cross-sectional adult population databases.

88 **Material and methods**

89 **Data Setting.** Populations analyzed in this study were subsets, who fitted the
90 inclusion criteria (see below Study Population), from two independent surveys. The
91 Nanjing Community Cardiovascular Risk Survey, using random cluster sampling

92 method [10], was carried out between 2011 and 2013 in the residents of 6
93 communities of urban areas in Nanjing, Jiangsu Province, China. In each community,
94 one street district or township was randomly selected. All households (n=6445) in
95 the selected street or town were included with only one participant aged ≥ 20 years
96 selected from each household, without replacement. Overall, 5824 participants
97 completed the survey question and following examination (response rate, 90%).

98

99 The Hefei Community Cardiovascular Risk Survey, also using random cluster
100 sampling [11], was conducted between 2012 and 2013 in the residents of 10 rural
101 areas in Hefei, Anhui Province, China. In each rural area, one township was
102 randomly selected. All households (n=22,032) in the selected town were included
103 with only 1 participant aged ≥ 20 years selected from each household, without
104 replacement. Overall, 20,269 participants completed the survey and examination
105 (response rate, 92%).

106

107 The Institutional Review Board of Jiangsu Province Hospital on Integration of
108 Chinese and Western Medicine approved the Nanjing and Anhui surveys (ethical
109 approval number 11-006). Signed written consents were obtained from all
110 participants.

111 **Study Population.** The current research analyzed the population with abnormal
112 glucose metabolism including those with type 2 diabetes and/or MS. Type 2
113 diabetes was defined using the WHO criteria for diabetes [12] or by self-reported
114 previous diagnosis on type 2 diabetes, and MS was defined using the International
115 Diabetes Federation criteria for MS [13].

116 **Measures.** Questionnaires and examinations in both surveys were completed,
117 wherever possible, through face-to-face interviews by trained research staff.
118 Questions included individual demographics (gender, age, body height and weight,
119 waist circumference, smoking status), detailed physical activity measurements, and
120 clinical information (self-reported diagnoses, medications and blood pressures).
121 Measurements including body height and weight, waist circumference, and blood
122 pressure were taken three times using a standardized methodology on the same
123 day in the local clinical center. Means of the two closest recordings were used. In
124 both studies all staffs were received a training session on the use of a standardized
125 protocol for anthropometric measurement techniques prior to study.
126 International Physical Activity Questionnaire (IPAQ) was used to obtain information
127 on weekly job-, transport- and housework- related physical activities during
128 recreational, sports and leisure time [14]. Participants were asked about the specific
129 activities which they did for 10 minutes or longer during the past week by activity
130 intensity, time duration per day and number of days per week. We summarized the
131 data of amount of physical activity into metabolic equivalent task (MET)-minutes
132 per week (Met Score). The square root of Met Score was used in analysis in the
133 current study due to the data was left skewed.

134 An overnight-fasting venous blood specimen for measurement of serum glucose
135 was collected by trained nurses using a vacuum tube containing sodium fluoride.
136 The fasting time was verified prior to collecting the blood specimen. Individuals,
137 who had not fasted for at least 10 hours, did not have their blood drawn. Fasting
138 blood specimens collected in both surveys were processed at one examination
139 center based in Nanjing. Plasma glucose and other blood measures such as levels

140 of creatinine and lipid were measured by an automated analyzer according to
141 manufacturer's instructions (Olympus AU600 auto analyzer (Olympus Optical,
142 Tokyo, Japan)).

143 **Statistical Analysis.** Continuous variables were reported by median along with
144 interquartile range (IQR). Categorical variables were reported as number with
145 percentage. Dose-response relationship between the transformed (square-rooted)
146 Met Score [x] and the level of fasting glucose was examined by natural cubic spline
147 model [t]. The final threshold was defined as the cut-off point with a significant
148 break in the regression coefficients and achieving the minimum AIC [15]. A 1000-
149 bootstrapping was applied to estimate the 95% confidence interval (95% CI) of the
150 final threshold [16]. The linear regression models were then used to quantify the
151 linear relationships between the level of fasting glucose and amount of physical
152 activity in data fragments separated by the identified threshold, with adjustment
153 for confounding factors. In the sensitivity analyses, these models were repeated in
154 each survey, gender, and age group (age<50 years, and age≥50 years). All analyses
155 were processed by STATA 16.0 with statistical significance defined by a two-tailed
156 *p* value less than 0.05.

157 **Results**

158 **Population Characteristics.** 9419 (36% of the total survey participants) were
159 identified as having metabolic disorders (1873 in Nanjing survey, and 7546 in Hefei
160 survey). Their demographic, clinical (including fasting glucose level) and physical
161 activity information are presented in Table 1. Fasting glucose levels were 5.7 (IQR
162 5.1 to 6.6), 5.5 (4.9 to 6.5), and 5.5 (5.0 to 6.5) for Nanjing, Hefei and the pooled
163 population, respectively. Amounts of physical activity (in square-rooted Met Score

164 / original Met score) were 42.2 (IQR 28.1 to 64.3) / 1,781 (790-4,134) MET-minutes
165 per week, 51.5 (35.5 to 71.5) / 2,652 (1,260-5,112) MET-minutes per week, and 50.0
166 (33.6 to 70.1) / 2,500 (1,129-4,914) MET-minutes per week, for Nanjing, Hefei and the
167 combined population, respectively.

168 **Physical Activity and Fasting Glucose.** The dose-response relationship between of
169 square-rooted Met Score and fasting glucose level after adjustment for
170 confounding factors (including age, gender, survey site, blood pressures, body
171 mass index, waist circumference, lipid profiles, creatinine, C-reaction protein, anti-
172 hypertension treatment, anti-diabetes treatment, and lipid-lowering treatment) is
173 demonstrated in Figure 1. A non-linear relationship was identified (Linearity test:
174 $P < 0.0001$): the level of fasting glucose remained stable before it decreased with the
175 increase of square-rooted Met Score beyond a certain amount of physical activity
176 threshold. The threshold (square-rooted Met score / original Met score) was found
177 to be at 66.6 (95% CI: 65.2 to 69.3) / 4,436 (4,251 to 4,802) MET-minutes per week.
178 Consistent findings for this dose-response relationship with the same threshold
179 were observed in subgroup analyses by survey site, gender, or age group (Figure 1).

180

181 Table 2 shows the relationship of amount of physical activity with level of fasting
182 glucose below and above the identified threshold. Below the threshold, no
183 significant association was seen, whereas above the threshold increase of each
184 standard deviation of square-rooted Met Score 29.8 (888 MET-minutes per week)
185 was significantly associated with a 0.25 mmol/L decrease in fasting glucose in the
186 pooled population, after adjustment for confounding factors. Similar association
187 patterns were seen in subgroup analyses by survey site, gender, or age group

188 (Table 2).

189

190 **Discussion**

191 Physical activity has been consistently reported as having a positive impact on
192 decreasing diabetes risk [17-20]. However, the findings on the association of
193 physical activity with fasting glucose has not been conclusive. In the general
194 population of young adults, the effect of physical activity on reduction of glucose
195 level was strong and was shown to be increased with the increasing frequency,
196 duration and intensity of exercise [21]. In middle aged healthy populations, one
197 study found there was significant association in females but not in males [10, 22],
198 while another study, which only recruited female samples for intervention,
199 demonstrated no significant effect of physical activity on fasting glucose level
200 [23]. Recent meta-analysis of randomized trials demonstrated that moderate
201 increases in physical activity were associated with significant reduction in fasting
202 glucose in both healthy and diabetic populations. However, the changes of fasting
203 glucose were larger among diabetic patients [6]. Our study, which analyzed in
204 adults with abnormal glucose metabolism, was generally in line with the previous
205 literature. However, it demonstrated a more complex relationship between the
206 amount of physical activity and level of fasting glucose: there was no association
207 within a certain amount of activity; however, beyond the certain threshold the
208 amount of physical activity was inversely associated with the level of fasting
209 glucose.

210 Our study was novel in terms of the use of natural cubic spline models for the
211 non-linear relationship. It contained more details in comparison to liner function

212 models with which most previous research applied. Based on the information
213 from our analysis, physical activity with moderate-to-vigorous intensity, sufficient
214 duration and frequency is encouraged to reach the threshold with regard to blood
215 glucose control.

216 This study benefits from its large sample size over 9000 individuals. However, it is
217 limited by its cross-sectional design, therefore no formal attempt with regard to
218 causality will be inferred. Data from questionnaire, as self-reported records, can
219 be biased in many reasons, such as recall and response bias. However, thanks to
220 the high response rates in both surveys such systematic error was not likely to be
221 large. There may be potential bias between the two surveys, such as equipment,
222 assay kit and research staff, on the measurement of fasting glucose level.

223 However, the patterns of relationship between amount of physical activity and
224 level of fasting glucose in each survey were highly consistent in subgroup analysis
225 by survey site. In the pooled dataset, the association results were further adjusted
226 for survey site in order to remove any such bias. Levels of fasting glucose are
227 influenced by many factors including diseases, medications and lifestyle variables.
228 Although in our surveys several potential confounding factors were collected and
229 adjusted in statistical models, more and detailed data on morbidity, use of
230 medication and lifestyle information were not available, which is a limitation of
231 the current study. Our results were consistent in both surveys, however,
232 populations were residents from the communities in eastern part of China,
233 highlighting the need to investigate other populations to validate the
234 generalizability of findings. Finally, as all analyses were preformed based on
235 square-rooted scores, the significant difference of original scores with its relevant

236 clinical difference could not be justified directly in the current study. Further
237 replication studies in the external population are warranted.

238 **Conclusion**

239 In conclusion, our study using natural cubic spline models, showed that the non-
240 linear relationship between physical activity and fasting glucose level exists in
241 Chinese adults with abnormal glucose metabolism as fasting glucose fasting
242 glucose was only inversely associated with square-rooted Met Score beyond a
243 certain square-rooted Met Score amount. Future studies with prospective data
244 are warranted to test whether blood glucose could be reduced through physical
245 activity only when exercise and sports attaining to a certain threshold.

246 **Author statement**

247 All authors approved the final version of the manuscript to be published. All authors
248 agreed to be accountable for all aspects of the work in ensuring the questions
249 related to the accuracy or integrity of any part of the work. CLL takes final
250 responsibility for the paper.

251 **Conflict of interest**

252 No potential conflicts of interest exist.

253 **Funding**

254 None.

255 **Ethical statement**

256 The Institutional Review Board of Jiangsu Province Hospital on Integration of
257 Chinese and Western Medicine approved the Nanjing and Anhui surveys (ethical
258 approval number 11-006). Signed written consents were obtained from all
259 participants.

260

261 **Author contribution statement**

262 DY, YC, LL: Conceived and designed the experiments, analyzed and interpreted the
263 data, wrote the paper; YC, TC: Analyzed and interpreted the data, wrote the
264 paper; YH, HM: conceived and designed the experiments, wrote the paper; All
265 authors read and approved the final manuscript.

266

267 **Acknowledgements**

268 Thanks to the staff numbers and participants in the Nanjing Community
269 Cardiovascular Risk Survey and Hefei Community Cardiovascular Risk Survey, China.

270

271

272 **References**

- 273 1. Guariguata, L, Whiting, DR, Hambleton, I, Beagley, J, Linnenkamp, U, Shaw, JE.
274 Global estimates of diabetes prevalence for 2013 and projections for 2035.
275 *Diabetes Res. Clin. Pract.*, 2014;2:137-149.
- 276 2. Hossain, P, Kawar, B, El Nahas, M. Obesity and diabetes in the developing
277 world—a growing challenge. *N. Engl. J. Med.*, 2007;3:213-215.
- 278 3. Al Tunaiji, H, Davis, JC, Mackey, DC, Khan, KM. Population attributable fraction
279 of type 2 diabetes due to physical inactivity in adults: a systematic review. *BMC*
280 *Public Health*, 2014:469-2458-14-469.
- 281 4. Lee, IM, Shiroma, EJ, Lobelo, F, Puska, P, Blair, SN, Katzmarzyk, PT et al. Effect
282 of physical inactivity on major non-communicable diseases worldwide: an analysis
283 of burden of disease and life expectancy. *Lancet*, 2012;9838:219-229.
- 284 5. Huebschmann, AG, Crane, LA, Belansky, ES, Scarbro, S, Marshall, JA,
285 Regensteiner, JG. Fear of injury with physical activity is greater in adults with
286 diabetes than in adults without diabetes. *Diabetes Care*, 2011;8:1717-1722.
- 287 6. Boniol, M, Dragomir, M, Autier, P, Boyle, P. Physical activity and change in
288 fasting glucose and HbA1c: a quantitative meta-analysis of randomized trials. *Acta*
289 *Diabetol.*, 2017;11:983-991.
- 290 7. Hu, G, Lindstrom, J, Valle, TT, Eriksson, JG, Jousilahti, P, Silventoinen, K et al.
291 Physical activity, body mass index, and risk of type 2 diabetes in patients with
292 normal or impaired glucose regulation. *Arch. Intern. Med.*, 2004;8:892-896.
- 293 8. Hu, P, Li, Y, Zhou, X, Zhang, X, Zhang, F, Ji, L. Association between physical
294 activity and abnormal glucose metabolism-A population-based cross-sectional
295 study in China. *J. Diabetes Complications.*, 2018;8:746-752.
- 296 9. Xiao, J, Shen, C, Chu, MJ, Gao, YX, Xu, GF, Huang, JP et al. Physical Activity and
297 Sedentary Behavior Associated with Components of Metabolic Syndrome among
298 People in Rural China. *PLoS One*, 2016;1:e0147062.
- 299 10. Yu, D, Chen, T, Qin, R, Cai, Y, Jiang, Z, Zhao, Z et al. Association between lung
300 capacity and abnormal glucose metabolism: findings from China and Australia.
301 *Clin. Endocrinol. (Oxf)*, 2016;1:37-45.
- 302 11. Shi, R, Cai, Y, Qin, R, Yan, Y, Yu, D. Dose-response association between physical
303 activity and clustering of modifiable cardiovascular risk factors among 26,093
304 Chinese adults. *BMC Cardiovasc. Disord.*, 2020;1:347-020-01627-6.

- 305 12. Devers, MC, Campbell, S, Shaw, J, Zimmet, P, Simmons, D. Should liver function
306 tests be included in definitions of metabolic syndrome? Evidence from the
307 association between liver function tests, components of metabolic syndrome and
308 prevalent cardiovascular disease. *Diabet. Med.*, 2008;5:523-529.
- 309 13. Alberti, KG, Zimmet, P, Shaw, J, IDF Epidemiology Task Forcesensus Group. The
310 metabolic syndrome--a new worldwide definition. *Lancet*, 2005;9491:1059-1062.
- 311 14. Lear, SA, Hu, W, Rangarajan, S, Gasevic, D, Leong, D, Iqbal, R et al. The effect of
312 physical activity on mortality and cardiovascular disease in 130 000 people from 17
313 high-income, middle-income, and low-income countries: the PURE study. *Lancet*,
314 2017;10113:2643-2654.
- 315 15. Kim SH, Yun JM, Jeong SM, Kim S, Yoo TG, Lee JE, Lim JS, Jeong HY, Nam KW, Kwon
316 HM, Park JH. **Kidney Dysfunction Impact on White Matter Hyperintensity Volume in**
317 **Neurologically Healthy Adults.** *Sci Rep.* 2019;9:8596
318
- 319 16. Atkinson RW, Yu D, Armstrong BG, Pattenden S, Wilkinson P, Doherty RM, Heal MR,
320 Anderson HR. **Concentration-response function for ozone and daily mortality: results from**
321 **five urban and five rural U.K. populations.** *Environ Health Perspect.* 2012;120:1411-1417.
- 322 17. Yu, D, Simmons, D. Association between blood pressure and risk of
323 cardiovascular hospital admissions among people with type 2 diabetes. *Heart*,
324 2014;18:1444-1449.
- 325 18. Yi, SW, Park, S, Lee, YH, Balkau, B, Yi, JJ. Fasting Glucose and All-Cause
326 Mortality by Age in Diabetes: A Prospective Cohort Study. *Diabetes Care*,
327 2018;3:623-626.
- 328 19. InterAct Consortium, Ekelund, U, Palla, L, Brage, S, Franks, PW, Peters, T et al.
329 Physical activity reduces the risk of incident type 2 diabetes in general and in
330 abdominally lean and obese men and women: the EPIC-InterAct Study.
331 *Diabetologia*, 2012;7:1944-1952.
- 332 20. Grontved, A, Pan, A, Mekary, RA, Stampfer, M, Willett, WC, Manson, JE et al.
333 Muscle-strengthening and conditioning activities and risk of type 2 diabetes: a
334 prospective study in two cohorts of US women. *PLoS Med.*, 2014;1:e1001587.
- 335 21. Laaksonen, DE, Lindstrom, J, Lakka, TA, Eriksson, JG, Niskanen, L, Wikstrom, K
336 et al. Physical activity in the prevention of type 2 diabetes: the Finnish diabetes
337 prevention study. *Diabetes*, 2005;1:158-165.
- 338 22. Weinstein, AR, Sesso, HD, Lee, IM, Cook, NR, Manson, JE, Buring, JE et al.
339 Relationship of physical activity vs body mass index with type 2 diabetes in
340 women. *JAMA*, 2004;10:1188-1194.

341 23. Matshipi, M, Monyeki, KD, Kemper, H. The Relationship between Physical
342 Activity and Plasma Glucose Level amongst Ellisras Rural Young Adult Males and
343 Females: Ellisras Longitudinal Study. *Int. J. Environ. Res. Public. Health.*,
344 2017;2:10.3390/ijerph14020198.

345 24. Yu, LL, Zhang, JL, Yan, JY, Zhao, JS, Wang, LS, Zhang, BY et al. Physical activity
346 level is associated with fasting plasma glucose among women aged 35-55 without
347 diabetes in Shandong, China. *Nutr. Metab. Cardiovasc. Dis.*, 2015;9:889-890.

348 25. Omar, A, Husain, MN, Jamil, AT, Nor, NSM, Ambak, R, Fazliana, M et al. Effect
349 of physical activity on fasting blood glucose and lipid profile among low income
350 housewives in the MyBFF@home study. *BMC Womens Health*, 2018;Suppl 1:103-
351 018-0598-9.

352

353

354

355

356

357

358

359

360

361

362

363

364

365

366

367

368

369 **Table 1. Characteristics of participants with metabolic disorder**

	Pooled data	Nanjing	Hefei
N	9,419	1,873	7,546
Female gender	6,924 (73.5)	1,430 (76.4)	5,494 (72.8)
Age, years	54 (46 to 60)	54 (48 to 60)	54 (46 to 60)
Current smoker	1,439 (15.5)	281 (15.7)	1,158 (15.4)
Waist circumference, cm	88.2 (83.3 to 95.3)	87.3 (83.0 to 94.0)	88.4 (83.4 to 95.7)
Body mass index, kg/m ²	26.6 (24.5 to 28.8)	26.5 (24.5 to 28.6)	26.6 (24.5 to 28.8)
Systolic blood pressure, mmHg	139 (127 to 155)	137 (125 to 152)	140 (127 to 156)
Diastolic blood pressure, mmHg	86 (79 to 95)	85 (78 to 93)	87 (79 to 95)
Fasting glucose, mmol/L	5.5 (5.0 to 6.5)	5.7 (5.1 to 6.6)	5.5 (4.9 to 6.5)
Total cholesterol, mmol/L	4.7 (4.2 to 5.4)	4.6 (4.0 to 5.2)	4.8 (4.2 to 5.4)
Triglyceride, mmol/L	1.6 (1.1 to 2.3)	1.5 (1.0 to 2.3)	1.6 (1.1 to 2.3)
Low-density lipoprotein cholesterol, mmol/L	2.6 (2.2 to 3.1)	2.5 (2.1 to 2.9)	2.7 (2.2 to 3.2)
High-density lipoprotein cholesterol, mmol/L	1.3 (1.1 to 1.5)	1.3 (1.1 to 1.5)	1.3 (1.1 to 1.6)
Creatinine, mmol/L	86 (76 to 96)	86 (77 to 96)	86 (76 to 96)
C-reaction protein, mmol/L	1.2 (0.6 to 2.6)	0.6 (0.4 to 2.1)	1.2 (0.6 to 2.7)
Taking anti-hypertension agent, n (%)	2,302 (24.5)	441 (23.7)	1,861 (24.7)
Taking anti-diabetes agent or insulin, n (%)	842 (9.0)	134 (7.2)	708 (9.4)
Taking lowering lipid agent, n (%)	279 (3.0)	52 (2.8)	265 (3.5)
Square-rooted Met Score / original Met Score,	50.0 (33.6 to 70.1) /	42.2 (28.1 to 64.3) /	51.5 (35.5 to 71.5) /
MET-minutes per week	2,500 (1,129 to 4,914)	1,781 (790 to 4,134)	2,652 (1,260 to 5,112)

370

371 Continuous variables are presented by median (interquartile range), and categorical variables

372 by number (percentage)

373

374 **Table 2. Change of fasting glucose related to physical activity**

	Change of fasting glucose per standard deviation of square-rooted Met Score	
	Below the threshold	Above the threshold
Main (pooled data) [¶]	0.09 (-0.01 to 0.20)	-0.25 (-0.35 to -0.14)
Nanjing survey [†]	0.09 (-0.03 to 0.23)	-0.18 (-0.32 to -0.04)
Hefei survey [†]	0.11 (-0.01 to 0.23)	-0.31 (-0.43 to -0.19)
Female [§]	0.07 (-0.002 to 0.14)	-0.24 (-0.35 to -0.13)
Male [§]	0.13 (-0.12 to 0.37)	-0.42 (-0.67 to -0.16)
Age<50 years [‡]	0.09 (-0.28 to 0.46)	-0.16 (-0.27 to -0.05)
Age≥50 years [‡]	0.02 (-0.09 to 0.12)	-0.28 (-0.44 to -0.12)

375 [¶]Adjusted for survey site, age, gender, blood pressures, body mass index, waist circumference, lipid
376 profiles, creatinine, C-reaction protein, anti-hypertension treatment, anti-diabetes treatment, and
377 lipid-lowering treatment;

378 [†]Adjusted for age, gender, blood pressures, body mass index, waist circumference, lipid profiles,
379 creatinine, C-reaction protein, anti-hypertension treatment, anti-diabetes treatment, and lipid-
380 lowering treatment;

381 [§]Adjusted for survey site, age, blood pressures, body mass index, waist circumference, lipid profiles,
382 creatinine, C-reaction protein, anti-hypertension treatment, anti-diabetes treatment, and lipid-
383 lowering treatment;

384 [‡]Adjusted for survey site, gender, blood pressures, body mass index, waist circumference, lipid
385 profiles, creatinine, C-reaction protein, anti-hypertension treatment, anti-diabetes treatment, and
386 lipid-lowering treatment;

387 One standard deviation of square-rooted Met Score is 29.8 (888 MET-minutes per week).

388 The threshold for square-rooted Met Score is 66.6 (4,436 MET-minutes per week).

389

390

391

392

393

394

395

396

397

398

399

400

401

402

403 **Figure 1. Adjusted dose-dependent relationship between physical activity and**
404 **fasting glucose among Chinese adults with metabolic disorder**
405

406 In plot-(a): survey site, age, gender, blood pressures, body mass index, waist circumference, lipid
407 profiles, creatinine, C-reaction protein, anti-hypertension treatment, anti-diabetes treatment, and
408 lipid-lowering treatment were adjusted;

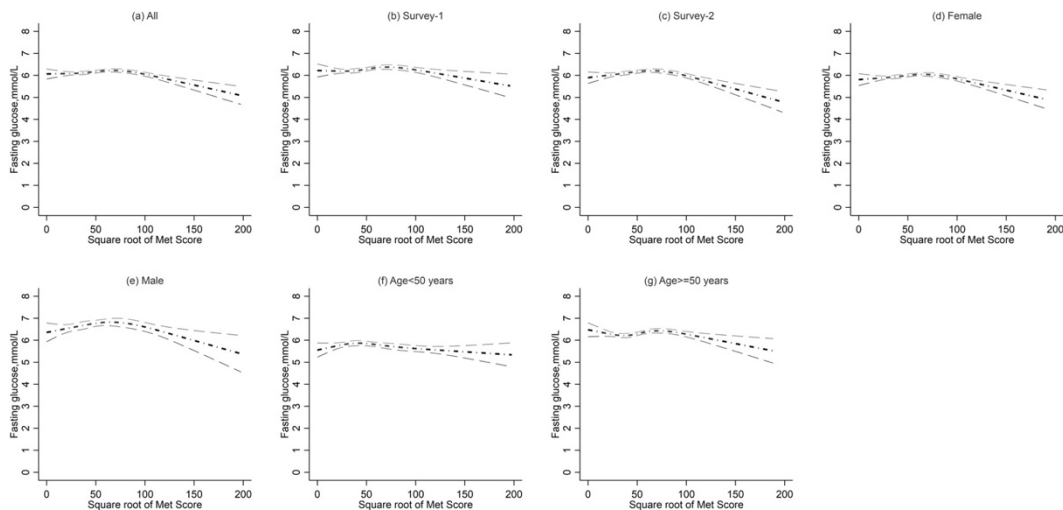
409 In plot-(b) & (c): age, gender, blood pressures, body mass index, waist circumference, lipid profiles,
410 creatinine, C-reaction protein, anti-hypertension treatment, anti-diabetes treatment, and lipid-
411 lowering treatment were adjusted;

412 In plot-(d) & (e): survey site, age, blood pressures, body mass index, waist circumference, lipid
413 profiles, creatinine, C-reaction protein, anti-hypertension treatment, anti-diabetes treatment, and
414 lipid-lowering treatment were adjusted;

415 In plot-(f) & (g): survey site, gender, blood pressures, body mass index, waist circumference, lipid
416 profiles, creatinine, C-reaction protein, anti-hypertension treatment, anti-diabetes treatment, and
417 lipid-lowering treatment were adjusted;

418

419



420